

CS USB RS485 Converter Driver Installation Guide

1. Supported Operating Systems

The driver supports Microsoft Windows 2000, XP and 2003.

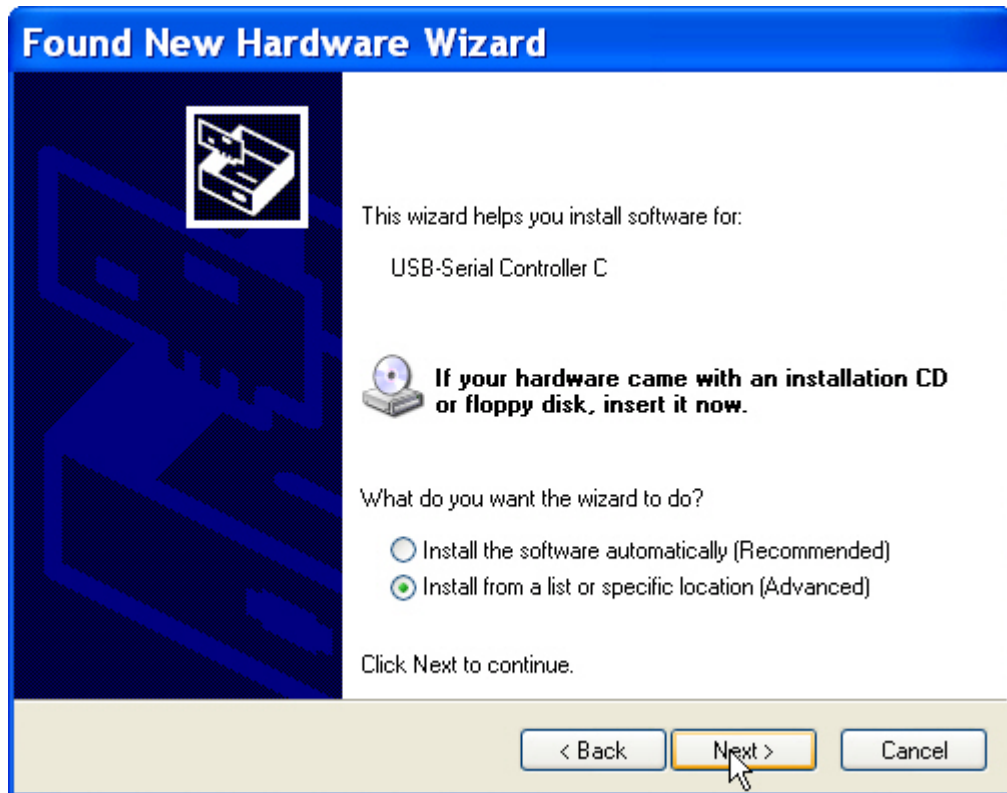
2. Installing the Driver

Connect the converter to a USB port of PC. Windows will detect the new device and launch the Found New Hardware Wizard if the converter driver has never been installed on your computer before. If your computer already has this driver installed, Windows will start using this driver automatically and will not launch the Found New Hardware Wizard.

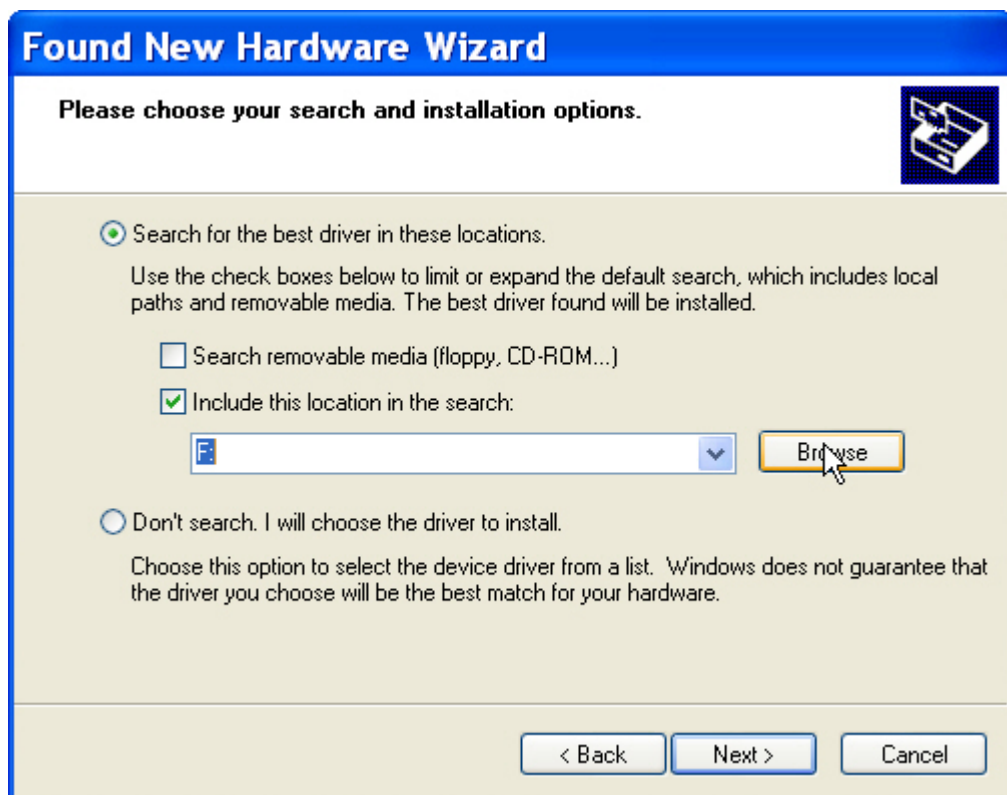
On the Found New Hardware Wizard, choose “No, not this time” and click Next.



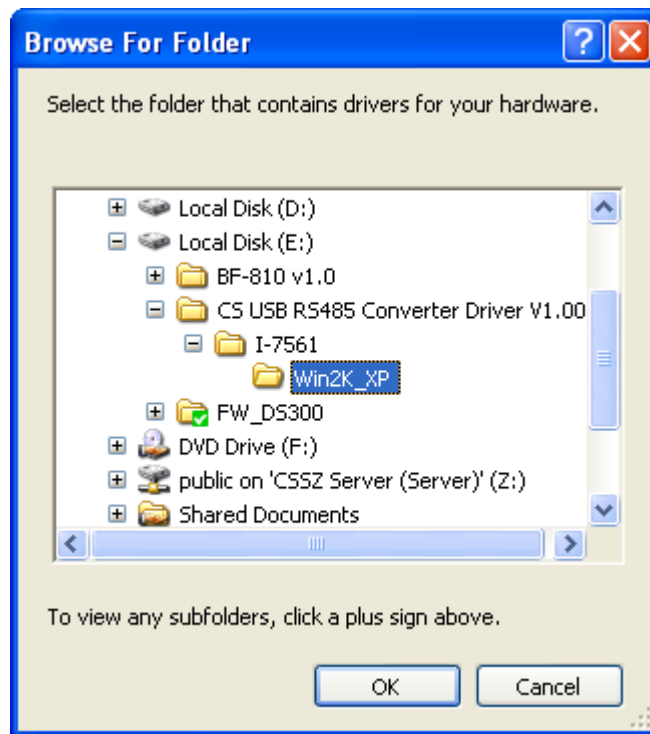
At the next step, choose “Install from a list of specific location (Advanced)” and click “Next”



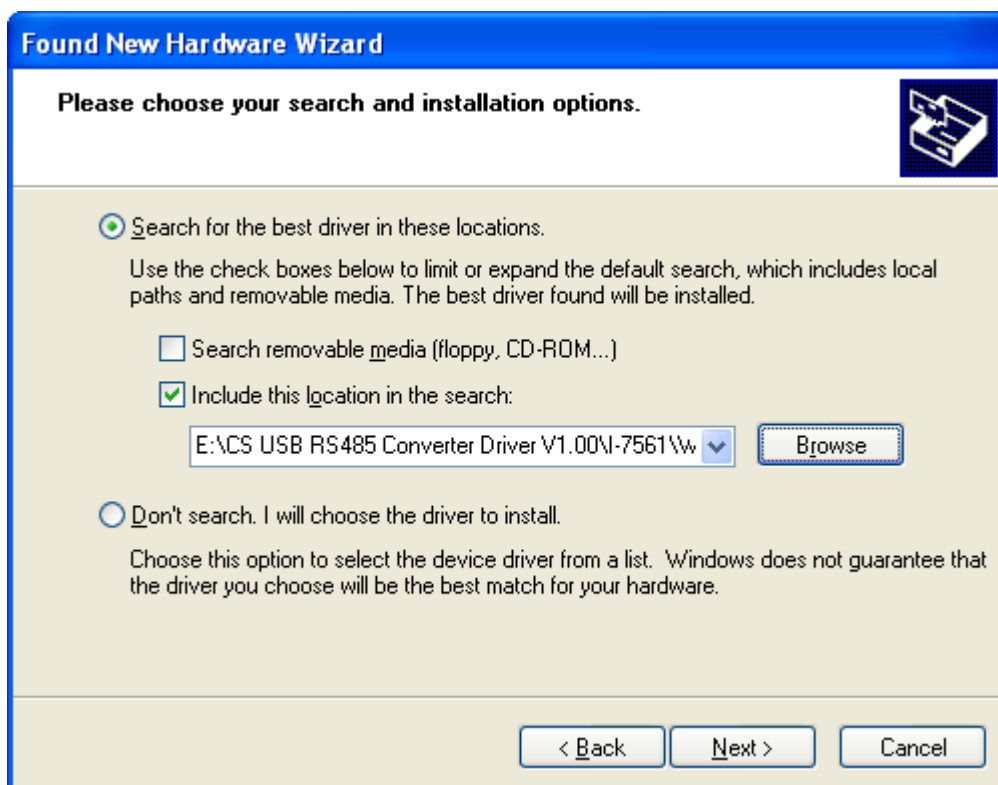
Choose "Search for the best driver in these locations", check "Include this location in the search:" box and click "Browse".



Select the folders "CS USB RS485 Converter Driver V1,00", "I-7561" and "Win2K_XP" in sequence and click "OK".



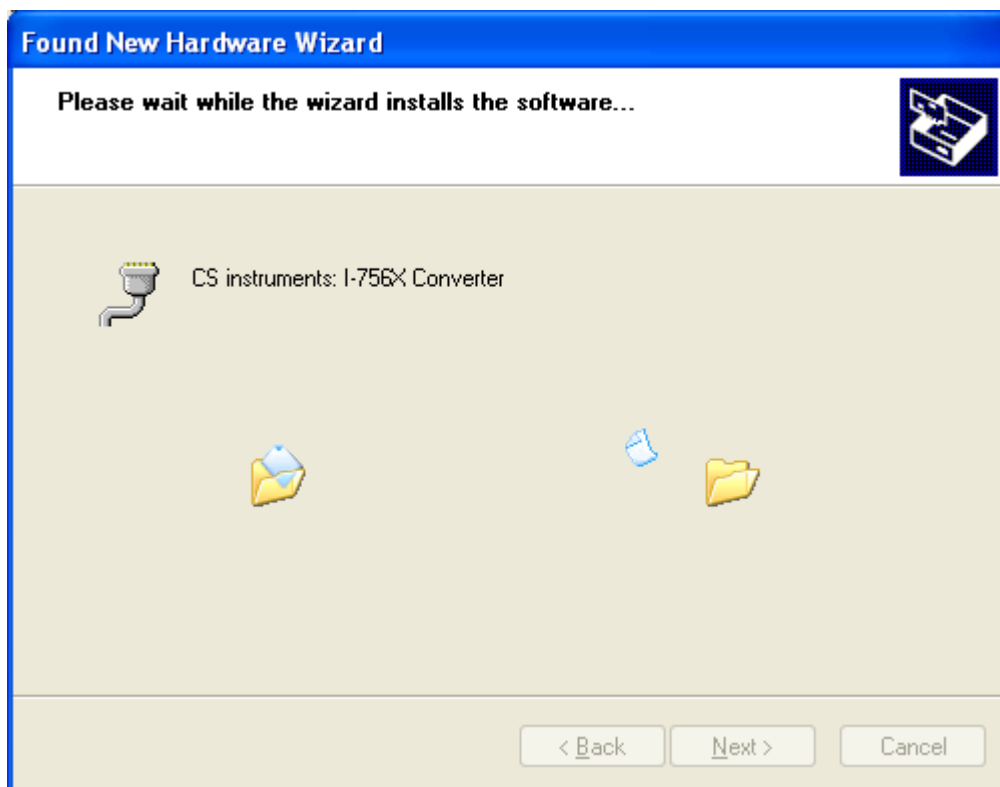
Click “Next” on the main dialog.



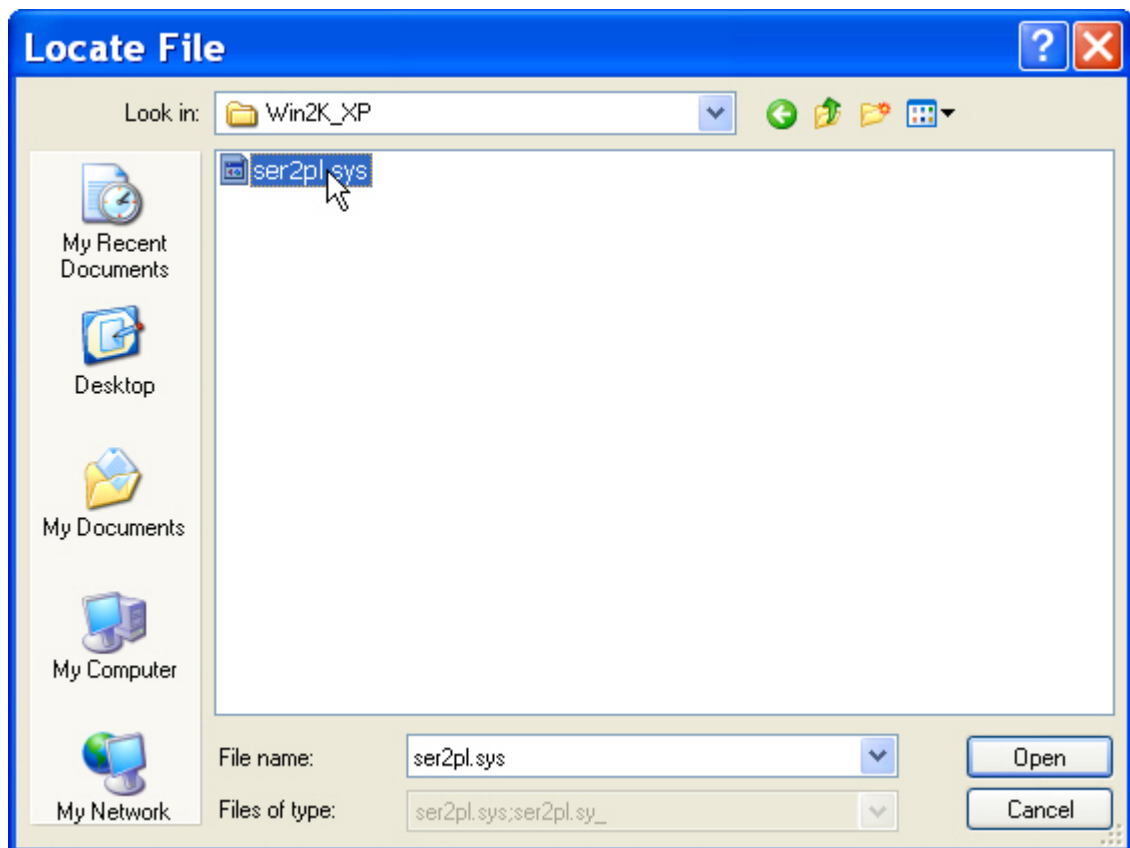
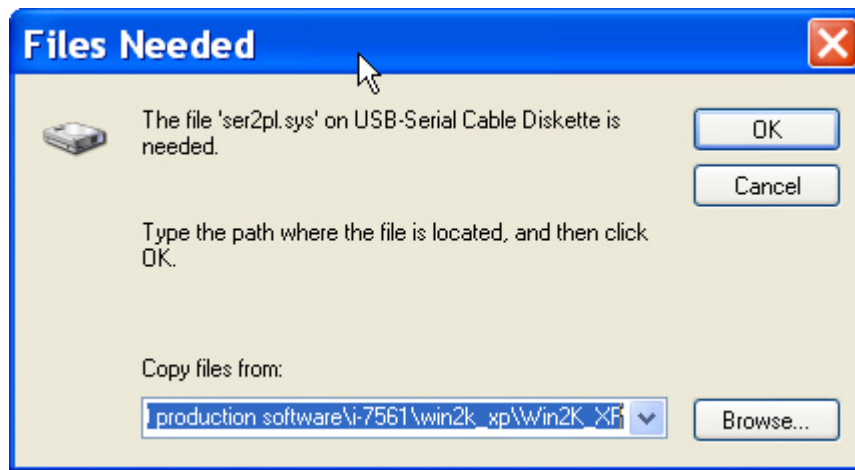
If you see the warning dialog below, just click “Continue Anyway”.



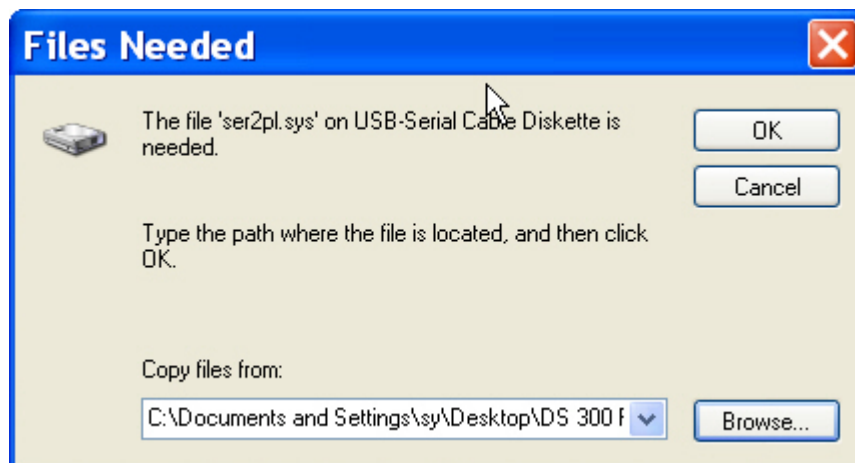
The wizard will then install the driver.



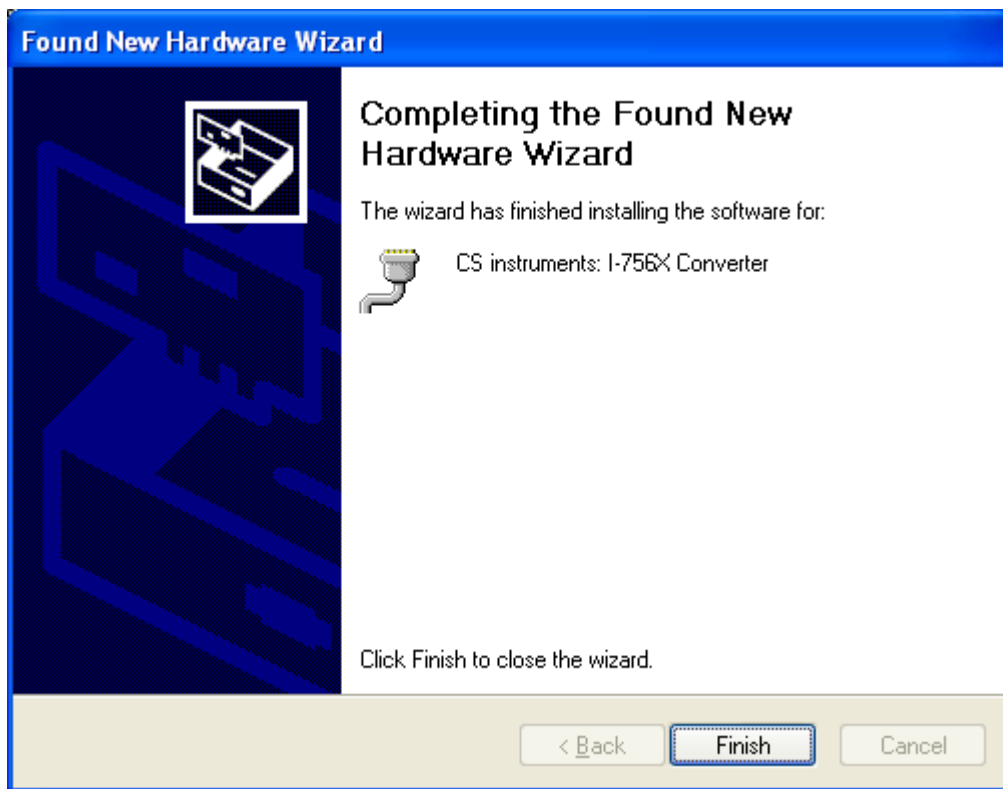
During the installation, you may see a “File Needed” dialog. When the dialog appears just click “Browse” and open these folders in sequence: “CS USB RS485 Converter Driver V1,00”, “I-7561” and “Win2K_XP” . Then double-click the file “ser2pl.sys”.



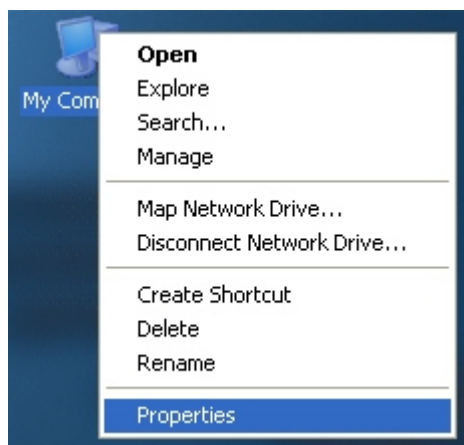
Now click "OK" on the "Files Needed" dialog to continue the installation.



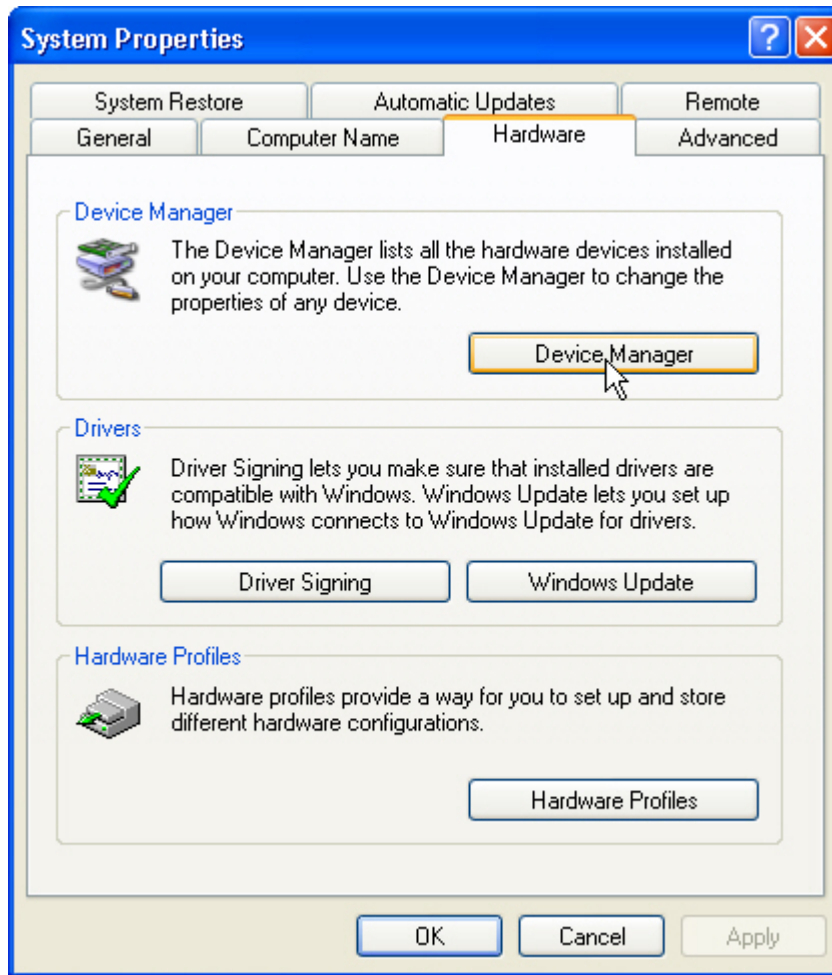
When the installation is completed, you will see this:



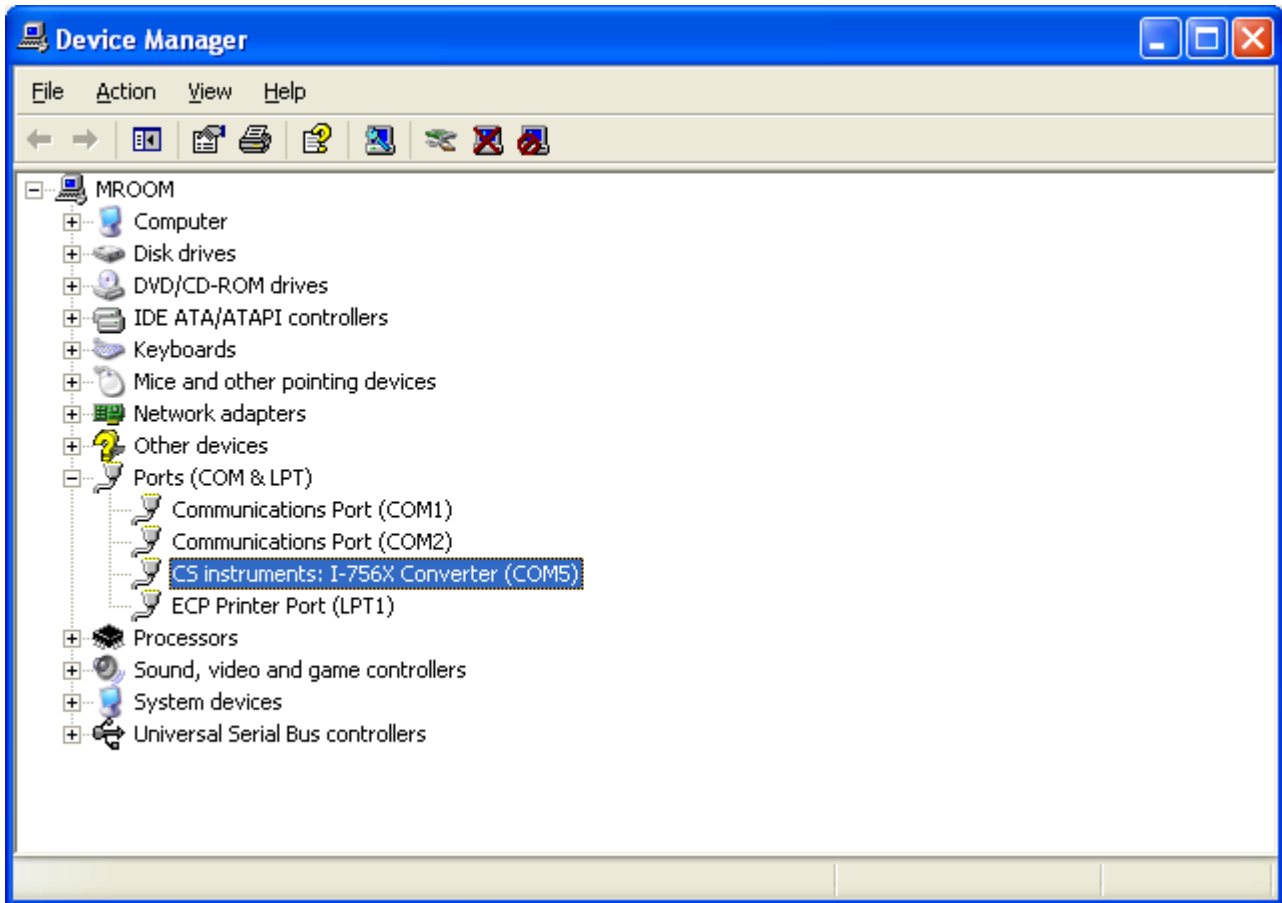
After installing the driver, right-click the My Computer icon on your desktop and select Properties to open the "System Properties" dialog.



On the "System Properties" dialog, select the Hardware tab and click "Device Manager" button.



Expand "Ports (COM & LPT)" section in the list to find the USB-to-Serial converter you have just installed and note its COM port number (COM5 in this example).

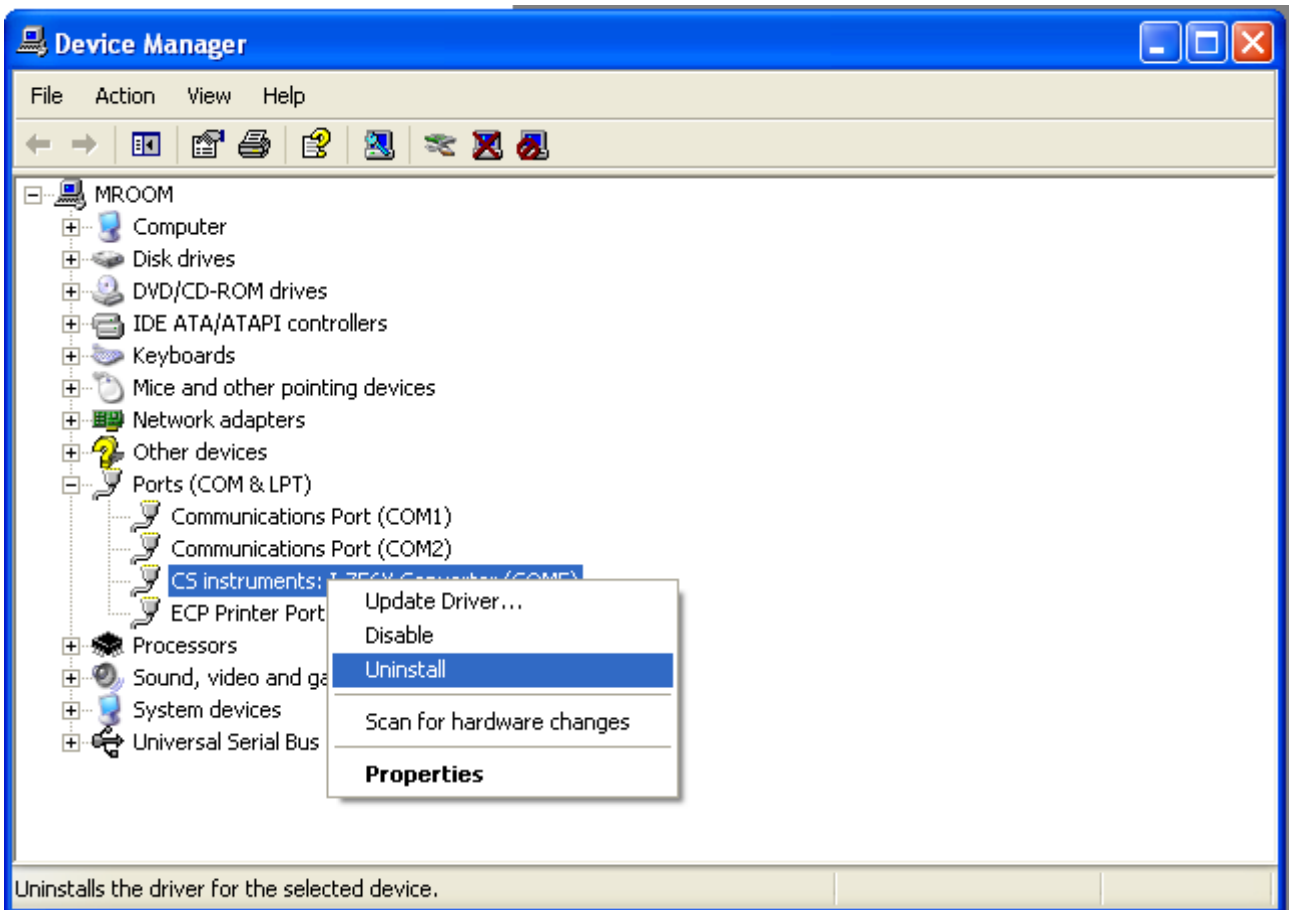


The CS USB RS485 Converter is now available to use through this COM port.

3. Uninstalling the Drivers

You may uninstall the driver for the CS USB RS485 Converter if you experience problems with this device. Just follow these steps:

- ✧ Right-click the My Computer icon on your desktop and select Properties to open the “System Properties” dialog.
- ✧ On the “System Properties” dialog, select the Hardware tab and click “Device Manager” button.
- ✧ Expand “Ports(COM&LPT)” section in the list to find the device “CS Instruments: I-756X Converter”.
- ✧ Right-click the device and select Uninstall.
- ✧ Click OK when the “Confirm Device Removal” dialog shows up.



After the uninstallation, you can follow the same instructions above to reinstall CS USB RS485 Converter driver without restarting your computer.