

Installation guide and short form instruction manual CS Soft Professional for CS 2390-5

1. System requirements

Supported operating systems:

- Microsoft Windows 2000, XP, 2003 and VISTA



Minimum Hardware:

- **Processor:** 500 MHz Intel Pentium III Workstation or equivalent
- **Memory:** 256 MB
- **Disk space:** 200 MB of free disk space

2. Preparation of the installation of CS Soft Professional software

- 2.1 The installation of the CS Soft software is only possible with administrator privileges. Please turn to the administrator of your company in order to ensure that you have those privileges.
- 2.2 Please implicitly install the driver for the connection of CS 2390-5 to the PC before inserting the CD with CS Soft into your drive:
Please choose your connection:
 - Connection cable CS 2390-5/ USB (driver on CD included in the scope of delivery)
 - Connection cable CS 2390-5/ RS 232 with RS 232/USB adapter (driver on CD included in the scope of delivery)
 - Connection cable CS 2390-5/ RS 232

3. CS Soft Professional installation

- 3.1 Please insert the CD.
The software will start automatically.
You will be guided through the installation, please select the next step of the program, i. e. please click to "Next".
The installation program automatically issues this symbol  on your screen. Please select "Create a desktop icon".
- 3.2 Before starting the program you should attach the connection cable between CS 2390-5 and the PC. You will get the information to which ComPort number your connection has been installed via the Windows system settings.
The number of this connection is needed for the configuration in the next step.
- 3.3.1 Now you can start the program by double click to the CSSoft symbol . In case of the initial start of the program the configuration dialogue will occur. Please select the ComPort number of your connection and the instrument CS 2390-5.



4 Start of the program

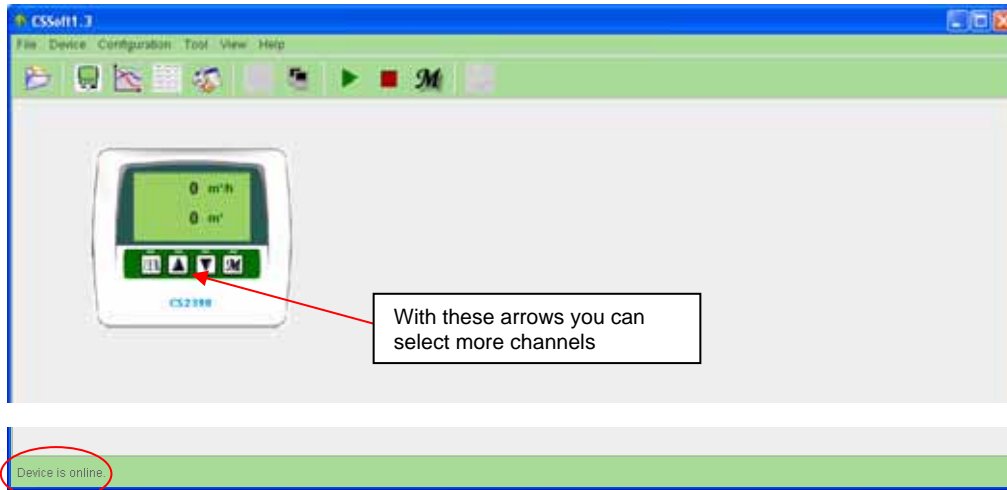
Start screen

After confirming with "OK" key the main screen of CS Soft will occur.

Please select the menu "**instrument**" and click to "**set up online access**".

Access will be set up, the measuring instrument is online.

Annotation: The menu "**instrument**" is not active in case of the graphic and table view.



5 Short form description of the functions of CS Soft Professional

In the menu "**help**" of the main menu screen you will find a help file with detailed descriptions of all important functions as well as a tutorial program.

Function	Description of the function
3.1 File	
Open File.....	Choose and open a file
Import.....	Choose and import a CS- file (with "Export Data" created file *.csd)
Export Data.....	select a file and export it into an Excel file or a CS-file
Print.....	Print a hard copy , only active in the graphic or table mode
Exit.....	Stop program
3.2 Device	
	(some functions are not active)
Go online.....	Building up a connection to CS2390-5
Go offline.....	Disconnect the device
Read Recorded Data from Device.....	Recorded data from the CS 2390-5
3.3 Configuration	
Device	
Basic.....	Input of a device name possible
Channels.....	Indication of the available channels of all probes with channel no., unit, address and resolution
Config Device.....	Synchronize PC time and device time, Enter sample rate, Clear memory in the CS 2390-5
Communication.....	Choose ComPort and Device
View.....	Only at the graphic or table view
4. Tool	
Start Recording.....	Enter sample rate (> 5 Sec.)
Stop Recording.....	Enter file name or accept default file name
Compact Database.....	Function for compacting database
5. View	
	Online view of current values
	Table view of chosen file
	Graphic view of chosen file
6. Help	
	Help (detailed help for all functions)
	Tutorial
	About
Special Functions	
	Graphic view , press the right mouse button:
	Insert comments
	View settings
	Scaling down (reset zoom)
Zoom Function	
Graphic Display	Graphic view , with pressed left mouse button choose the zoom area max. 2 different units presentable