

Installation guide and short form instruction manual CS Soft Professional with service cable and interfacebox IF100

1. System requirements

Supported operating systems:

- Microsoft Windows 2000, XP, 2003 and VISTA

Minimum Hardware:

- **Processor:** 500 MHz Intel Pentium III Workstation or equivalent
- **Memory:** 256 MB
- **Disk space:** 200 MB of free disk space


2. Preparation of the installation of CS Soft Professional software


- 2.1 The installation of the CS Soft software is only possible with administrator privileges. Please turn to the administrator of your company in order to ensure that you have those privileges.
- 2.2 Copy the folder „CS USB service cable driver V1.00“ from the CD on your computer. Connect the USB interface of the interfacebox with your PC . Windows will find the new device and the "assistant searching for new hardware" appears. When required please follow the Installation Guide "InstallationGuide_Driver_InterfaceBox.pdf".

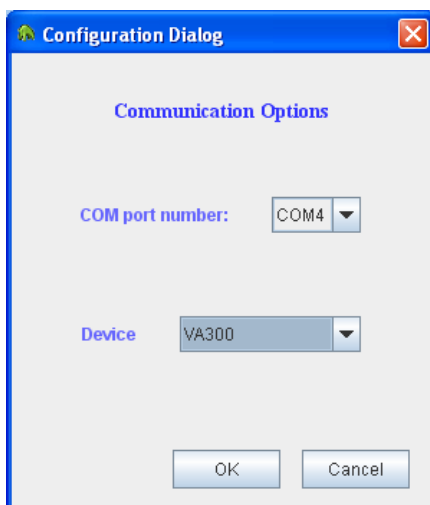
3. CS Soft Professional installation

- 3.1 Please insert the CD.

You will be guided through the installation, please select the next step of the program, i. e. please click to "Next".

The installation program automatically issues this symbol  on your screen. Please select "Create a desktop icon".

- 3.2 Before starting the program make sure that the connection cable to your PC is connected.
- 3.3.1 Now you can start the program by double click to the CSSoft symbol . In case of the initial start of the program the configuration dialogue will occur. Please select the device.



Note:

If you want to connect a DP 300, please choose the device FA 300

4 Start of the program

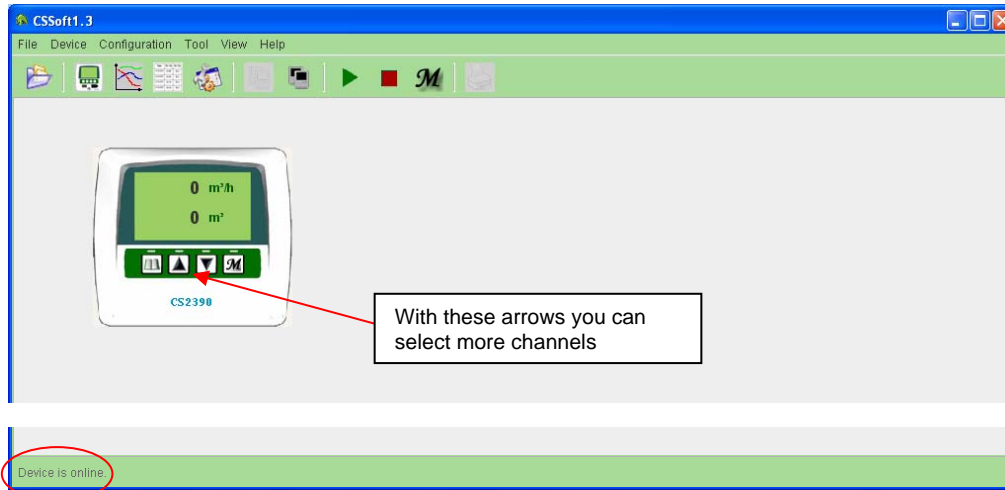
Start screen

After confirming with "OK" key the main screen of CS Soft will occur.

Please select the menu "**Device**" and click to "**Go online**".

Connection will be set up, the measuring instrument is online.

Annotation: The menu "**Device**" is not active in case of the graphic and table view.



5 Short form description of the functions of CS Soft Professional

In the menu "**Help**" of the main menu screen you will find a help file with detailed descriptions of all important functions as well as a tutorial program.

Function	Description of the function
3.1 File	
Open File.....	Choose and open a file
Import.....	Choose and import a CS- file (with "Export Data" created file *.csd)
Export Data.....	select a file and export it into an Excel file or a CS-file
Print.....	Print a hard copy , only active in the graphic or table mode
Exit.....	Stop program
3.2 Device	
	(some functions are not active)
Go online.....	Building up a connection to a device
Go offline.....	Disconnect the device
Read Recorded Data from Device.....	Recorded data from device
3.3 Configuration	
Device	
Basic.....	Input of a device name possible
Channels.....	Indication of the available channels of all probes with channel no., unit, address and resolution
Communication.....	Choose ComPort and Device
View.....	Only at the graphic or table view
4. Tool	
Start Recording.....	Enter sample rate (> 5 Sec.)
Stop Recording.....	Enter file name or accept default file name
Compact Database.....	Function for compacting database
5. View	
	Online view of current values
	Table view of chosen file
	Graphic view of chosen file
6. Help	
	Help (detailed help for all functions)
	Tutorial
	About
Special Functions	
	Graphic view , press the right mouse button:
	Insert comments
	View settings
	Scaling down (reset zoom)
Zoom Function	
	Graphic view , with pressed left mouse button choose the zoom area
Graphic Display	
	max. 2 different units presentable