

DS 300 USB Driver Installation Guide

DS 300 USB Driver enables applications running on your computer to communicate with DS 300 via a USB port.

1. System Requirements

You should make sure your computer meets the following system requirements before installing DS 300 USB Driver.

Supported Operating Systems

This driver can be installed on Microsoft Windows 2000, XP, 2003 and Vista.

Minimum Hardware Configurations

Processor: 500 MHz Intel Pentium III workstation or equivalent

Memory: 256 MB

Disk space: 200 MB of free disk space

2. Installing the Drivers

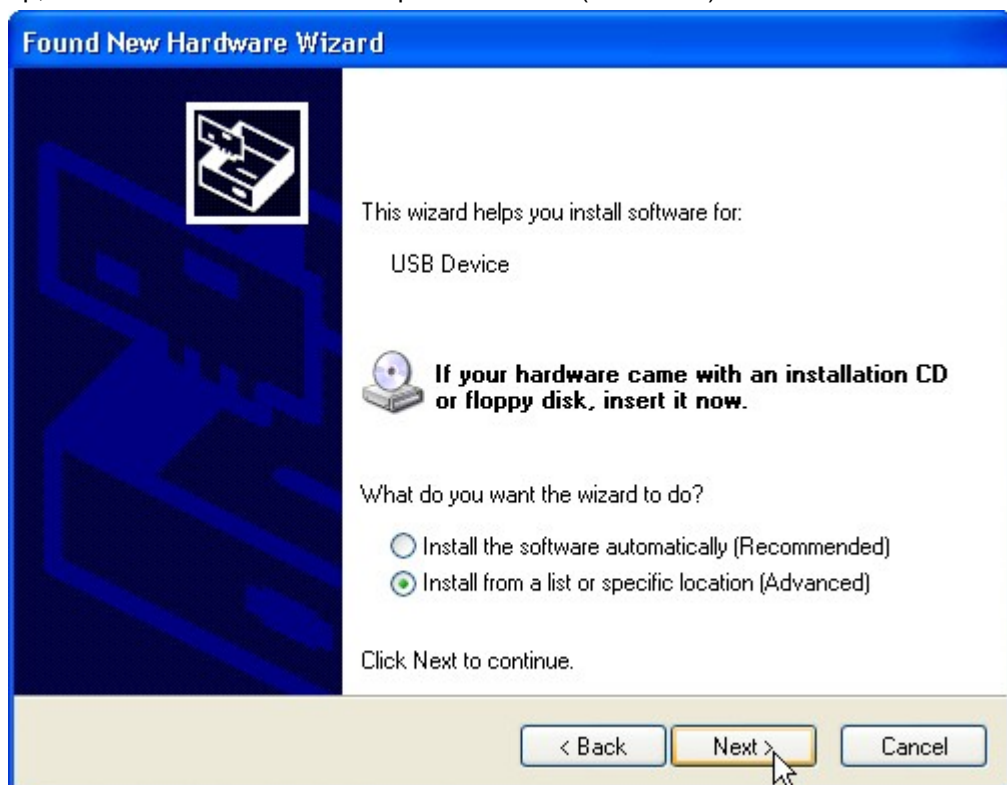
Before installing the driver, please make sure you are logged on to Windows as an Administrator. Administrator privileges are required to install a device driver. Also, please make sure you have copied or downloaded the required driver files to your computer. This guide assumes that you have placed the folder "DS 300 USB Driver" containing the driver files on your computer's desktop.

To install DS 300 USB driver, do the following:

- Connect the USB port of DS 300 to one of your computer's USB ports using a USB cable.
Windows will detect the new device and launch the Found New Hardware Wizard if DS 300 USB driver has never been installed on your computer before. If your computer already has this driver installed, Windows will start using this driver automatically and will not launch the Found New Hardware Wizard.
- On the Found New Hardware Wizard, choose "No, not this time" and click "Next".



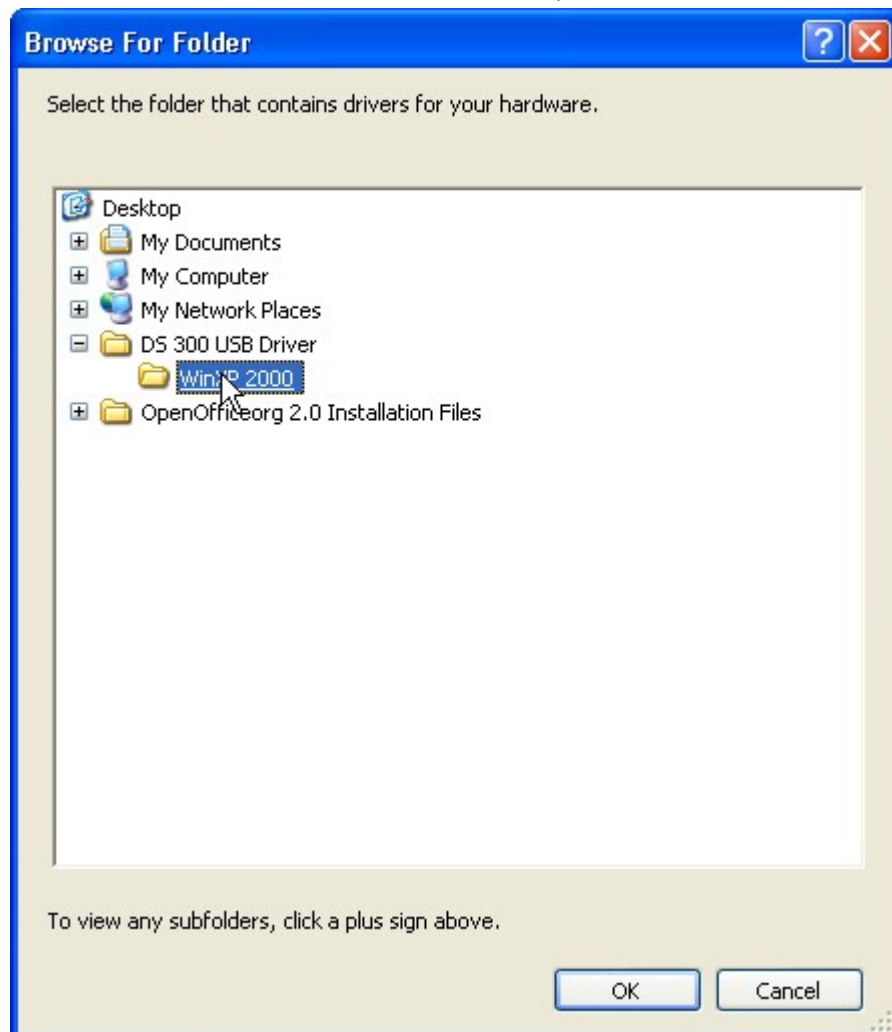
- At the next step, choose “Install from a list of specific location (Advanced)” and click “Next”.



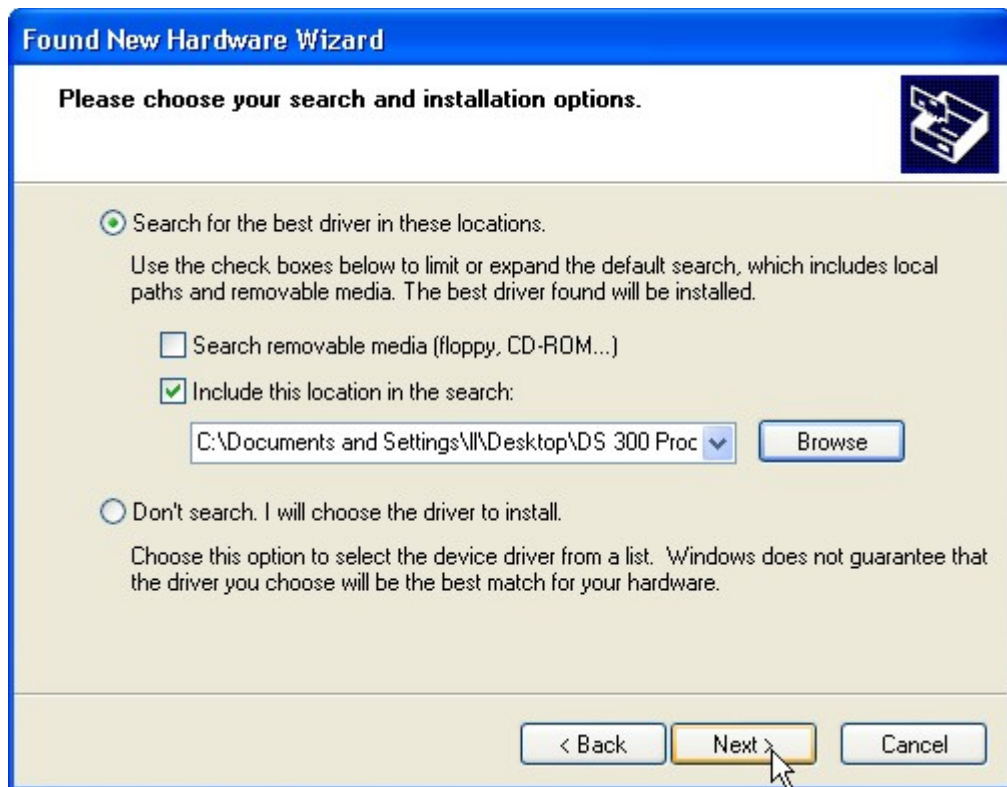
- Choose “Search for the best driver in these locations”, check “Include this location in the search:” box and click “Browse”.



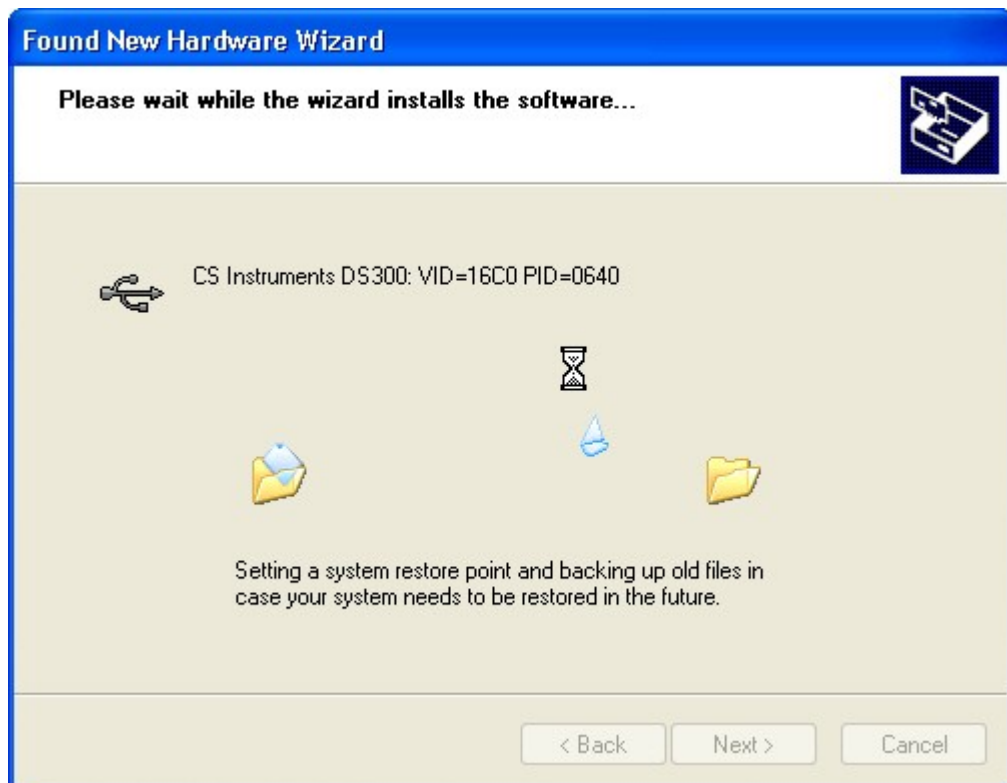
- Select the folders "DS 300 USB Driver" and "WinXP 2000" in sequence and click "OK".



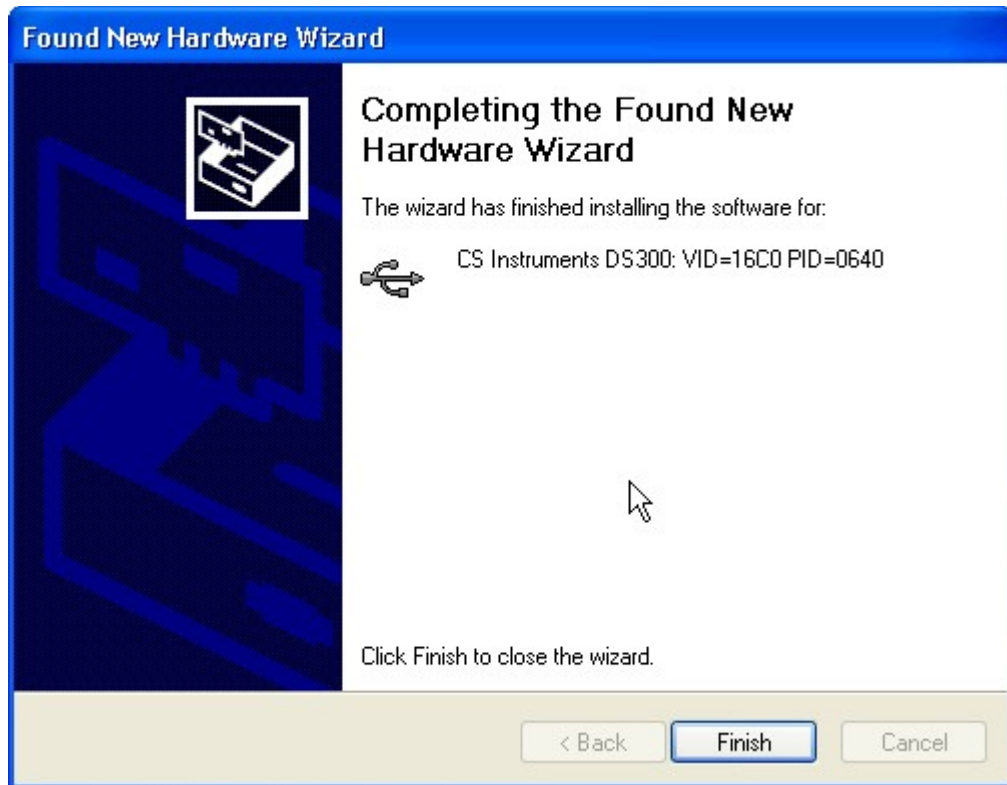
- Click "Next" on the main dialog.



The wizard will then install the driver.



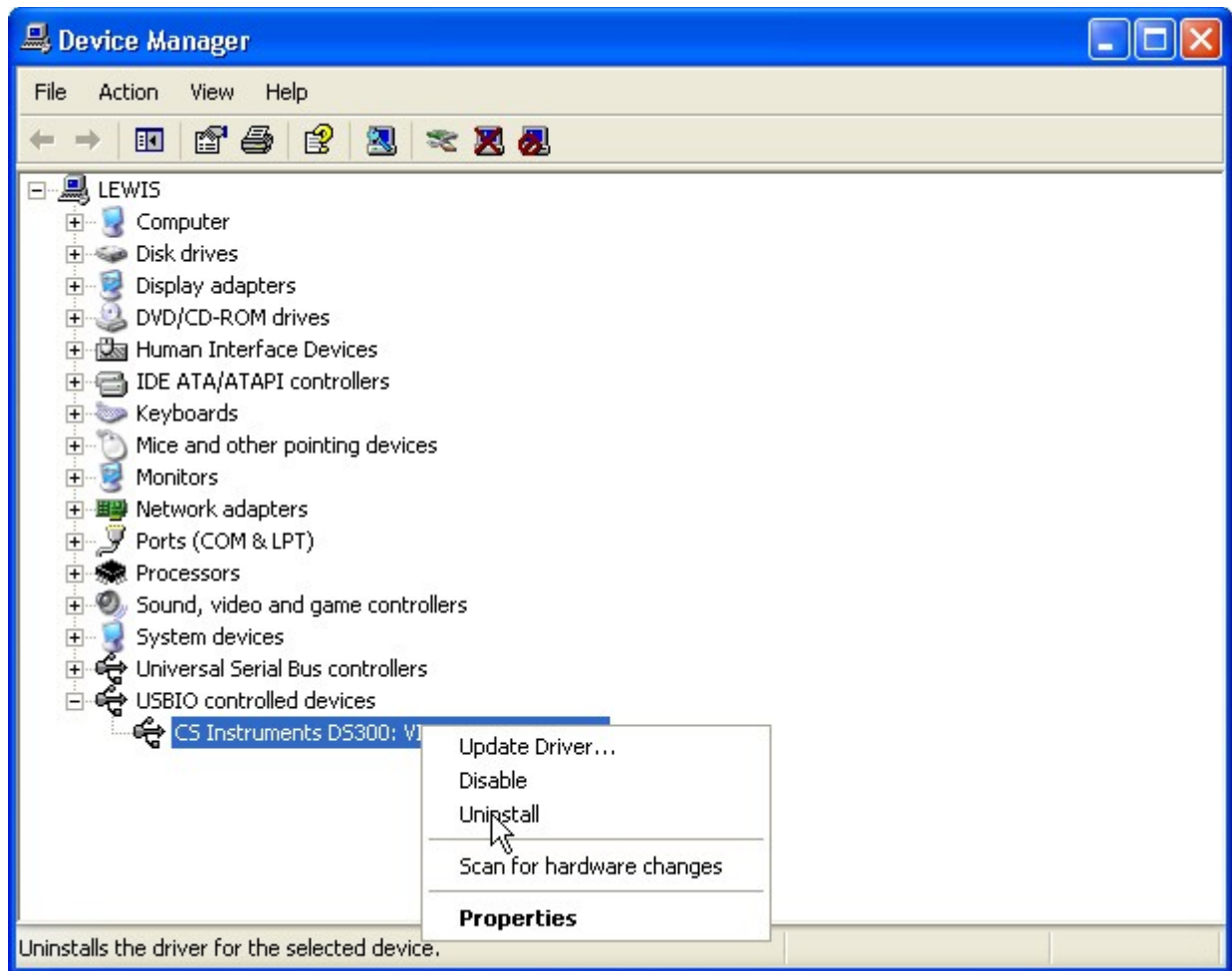
When the installation is completed, you will see this:



3. Uninstalling the Driver

You may uninstall DS 300 USB driver. Just follow these steps:

- ✧ Right-click the My Computer icon on your desktop and select Properties to open the "System Properties" dialog.
- ✧ On the "System Properties" dialog, select the Hardware tab and click "Device Manager" button.
- ✧ Expand "USBIO controlled devices" section in the list to find the device "CS Instruments DS300".
- ✧ Right-click the device and select Uninstall.
- ✧ Click OK when the "Confirm Device Removal" dialog shows up.



After the uninstallation, you can follow the same instructions above to reinstall DS 300 USB driver without restarting your computer.