

CS Soft Basic

Manual

Revision D

File:	Manual_en.docx
last saved:	2011-10-28 11:09

Alterations page

Revision D	Alteration	Date	Caseworker
A	First edition	2011-07-21	TE
B	<ul style="list-style-type: none">• Description Merge• Menu item Extras omitted	2011-09-14	TE
C	<ul style="list-style-type: none">• Multiple Selection• Load, save, delete settings• Analysis: Cost input, dual rate	2011-10-21	TE
D	<ul style="list-style-type: none">• Illustrations update	2011-10-24	TE

Dear customer,

every year thousands of customers by our high-quality products

And they do this for good reason:

- We offer an excellent price-performance ratio. Reliable quality at a fair price.
- With a professional experience of over 20 years, we are able to provide you with the best possible measuring solutions.
- Our high demand towards quality.
- Of course all of our devices bear the CE Mark which is required by the EU.
- Calibration certificates, seminars and consulting.
- Even after you have purchased our products you can count to be there for you when you need us.

Through our service you are guaranteed to receive a quick assistance.

Table of contents

Alterations page	2
Table of contents	4
Illustration Index	5
Table Index	6
1 Introduction	7
2 Installation	7
3 General	7
3.1 Menu File	7
3.1.1 New	7
3.1.2 Open	9
3.1.3 Merge	10
3.1.4 Export	11
3.1.5 Import	12
3.1.6 Delete	12
3.1.7 Exit	12
3.2 View menu	13
3.3 Info menu	13
3.3.1 Help	13
3.3.2 Language	13
3.3.3 License	13
3.3.4 About	13
4 Overview	14
4.1 Display current measurement values	14
4.2 Record current measurement values	15
5 Data	17
5.1 Diagram View	18
5.2 Statistics	20
5.3 Tabular View	21
5.4 Raw Data	21
6 Analysis	23
7 Licensing	25
8 Support and Service	27

Illustration Index

Illustration1: Automatic device devices	7
Illustration2: Open file	8
Illustration3: File selection	8
Illustration4: Entering a file name	8
Illustration5: open Records.log	9
Illustration6: Open file	10
Illustration7: Merging files	10
Illustration8: Enter a filename for the merged file.....	11
Illustration9: Merging status.....	11
Illustration10: Exporting	11
Illustration11: Importing	12
Illustration12: File deletion	12
Illustration13: Language selection	13
Illustration14: Establish connection	14
Illustration15: Current measurement values.....	15
Illustration16: Real-time data recording naming	15
Illustration17: Real-time data recording	16
Illustration18: Diagram Explorer	17
Illustration19: Line Style	17
Illustration20: Y-axis scaling	17
Illustration21: Diagram View	18
Illustration22: Raw data diagram	19
Illustration23: Moving average.....	19
Illustration24: Statistical analysis	20
Illustration25: Tabular view	21
Illustration26: Raw Data	22
Illustration27: Chronological sorting ascending.....	22
Illustration28: Filter - channel "A4"	22
Illustration29: Grouping "channel"	23
Illustration30: Consumption Analysis	23
Illustration31: Consumption Analysis configuration.....	24
Illustration32: Consumption Analysis	24
Illustration33: Info test version	25
Illustration34: Activation options	25
Illustration35: Activation data.....	26

Table Index

Table 1: Edit overview 14

1 Introduction

With the help of the CSSoftBasic software, measurement data from the new device series (starting from the DS500) can be retrieved, saved, visualized and evaluated.

2 Installation

To install the software execute the "Setup.exe" and follow the installation instructions. The software is installed automatically.

3 General

In this chapter the menu items are described that have the same functionality in all views.

3.1 Menu File

3.1.1 New

3.1.1.1 Read Recorded Data from Device

With the help of this menu item data can be read into CSSoftBasic from any device.

After clicking on the menu items the following screen to select the device will be opened. All devices which are present in the same network as the computer are displayed in the window.

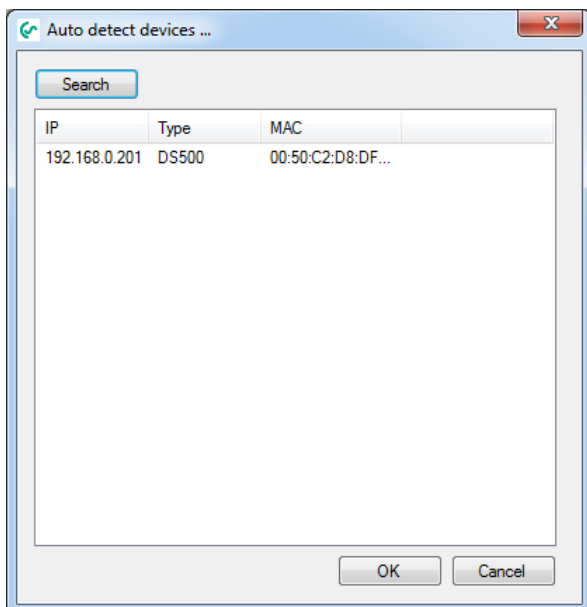


Illustration1: Automatic device devices

By double-clicking on the desired device or by selecting it and confirming with OK, a connection to the respective device will be established and a list of the available data displayed.

Prerequisite: *The device must be connected to the same ethernet network as the computer.*

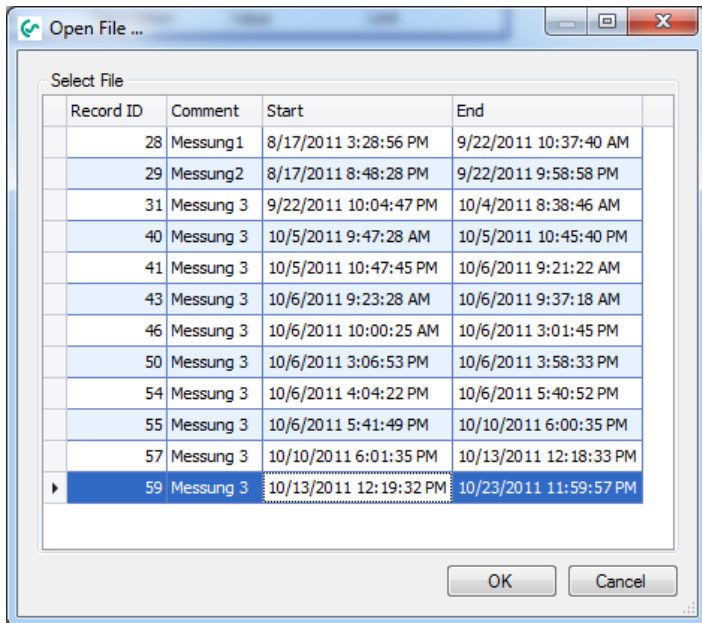


Illustration2: Open file

In the list of all available files, a file can be selected by double-clicking or by selecting it and confirming with OK.

The files may contain data from a large time frame. It is possible to restrict the timeframe through the following function.

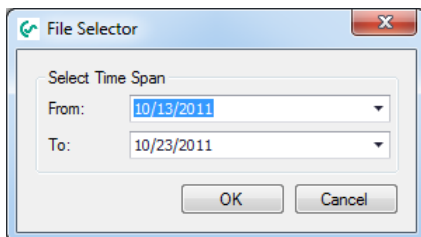


Illustration3: File selection

After selecting the time frame and confirming with "OK" the following window will open.

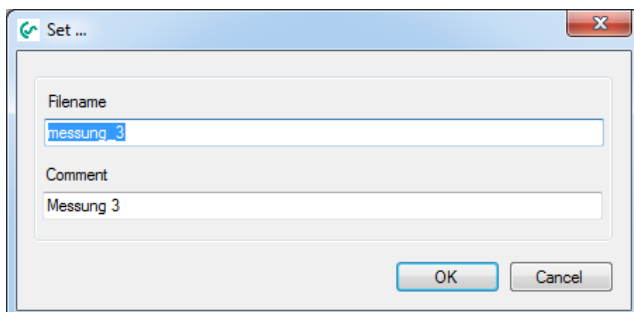


Illustration4: Entering a file name

The default name for the "Filename" is automatically generated from the comment that was input into the device. For the "file name" only contain small letters and numbers without spaces or special characters may be used. Both the "Filename" and the "Comment" may be changed by the operator. As the default comment, the comment that was entered into the device for the measurement will be used.

After a confirmation with "OK" the data transfer will start. An individual file for every day will be stored internally in the device. These files are successively loaded and decoded.

CAUTION: For large amounts of data, data import may take some time to complete.

In order to load multiple files simultaneously, in the window Illustration2: Open file, you can mark several files. For this, use the standard Windows keys "Ctrl" or "Shift".

When selecting multiple files, the time frame as shown in Illustration3: File selection can not be restricted.

3.1.1.2 Read Device File

If data has been transferred to a USB flash drive, it can be read via this menu item. The folders stored on the USB drive folders can be stored on any medium. The files in the "export" folder must always be stored in a single folder. The file names may not be changed.

After clicking on the menu item the following screen to select the data (RECORDS.LOG) will be opened:

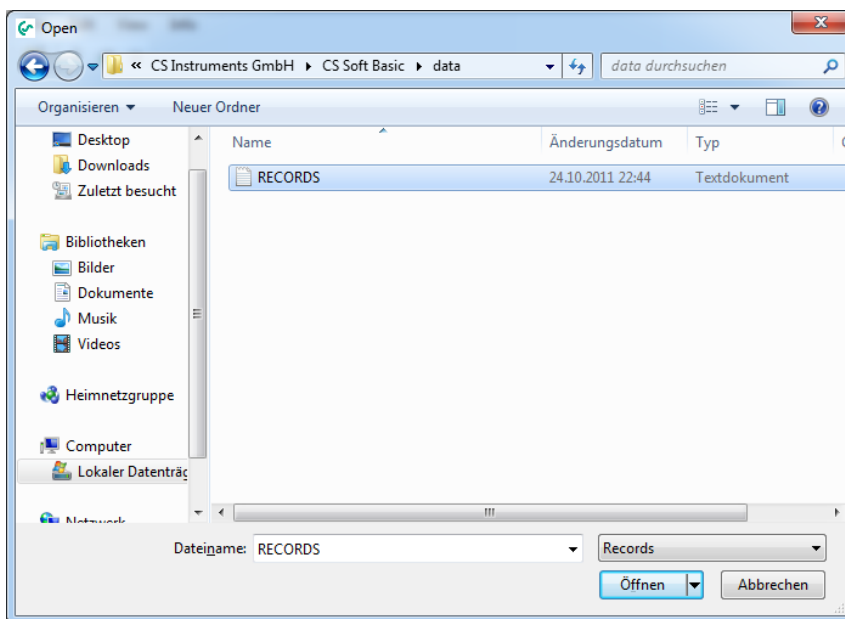


Illustration5: open Records.log

Select the desired folder containing the RECORDS.LOG file and confirm by clicking on the button "open".

Just as described under 3.1.1.1 Read Recorded Data from Device, individual files and their time frames can now be selected.

3.1.2 Open

A file can be opened using this menu item. For this, the following dialog is displayed:

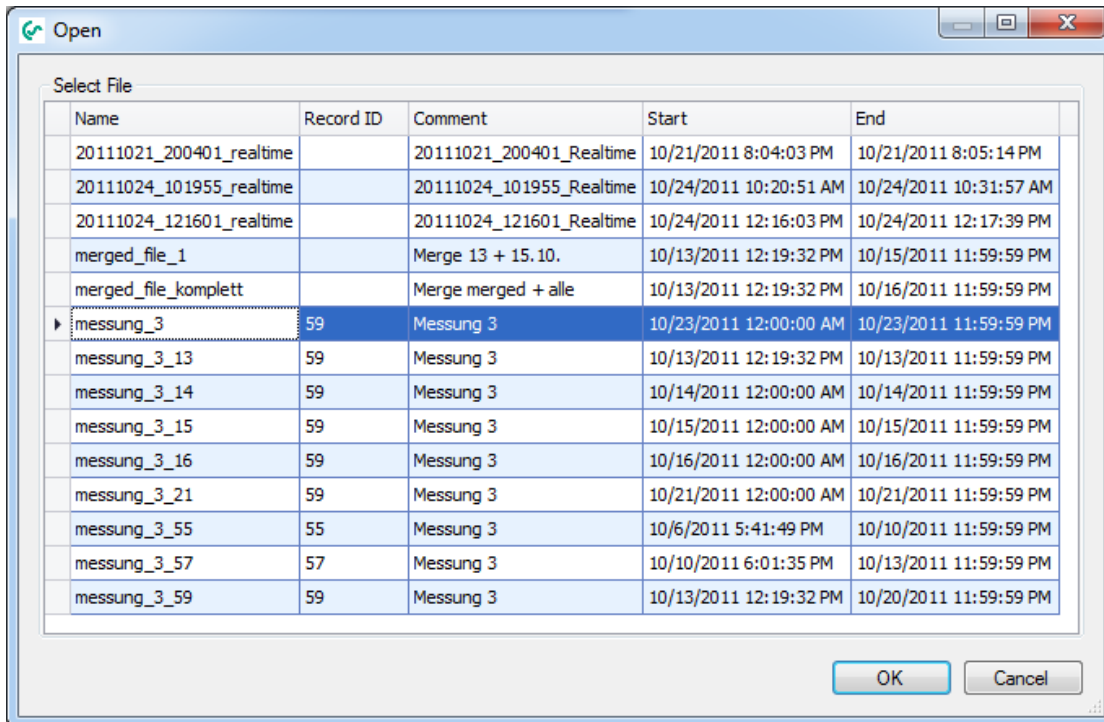


Illustration6: Open file

By double-clicking or by selecting and confirming the respective file will be opened.

Incorrect files can be clearly identified as such, if they do not contain any entries except for the name (see Illustration6: Open file entry "measurement_3_23").

3.1.3 Merge

With this menu item different files can be merged.

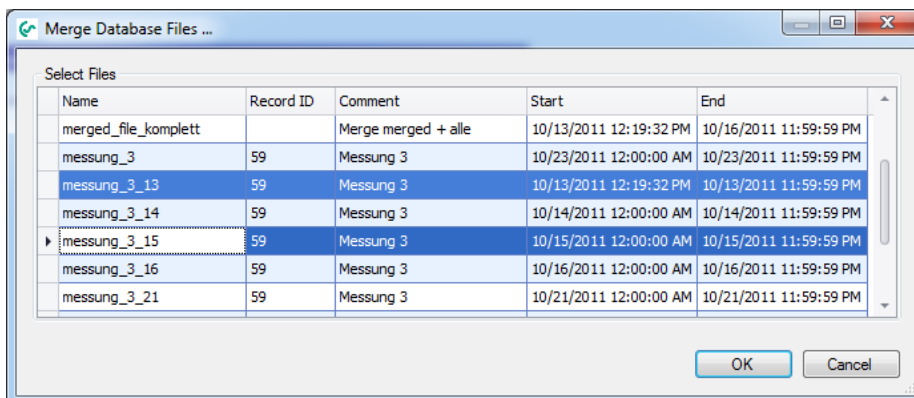


Illustration7: Merging files

Select the files you want to merge.

After confirming with "OK" the following window will open.

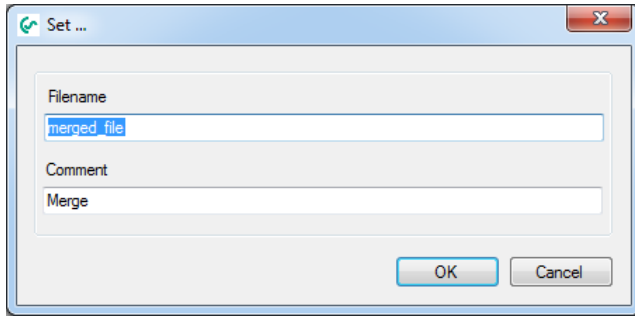


Illustration8: Enter a filename for the merged file.

The merged files will be stored in a new file.

Here you can assign any name for the new file. The "file name" may only contain small letters and numbers without spaces or special characters. Both the "file name" and the "comment" may be changed by the operator.

After confirming with "OK" the files will be merged.

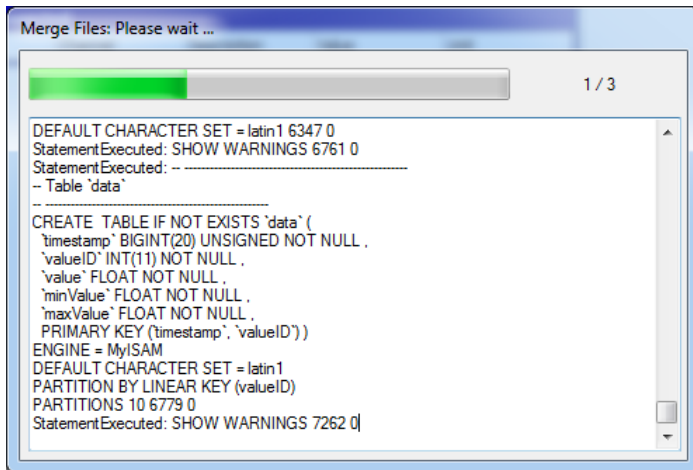


Illustration9: Merging status

During the merge process, you will receive detailed information in the status window.

3.1.4 Export

This function is intended for moving a file to a different computer or to perform a data backup.

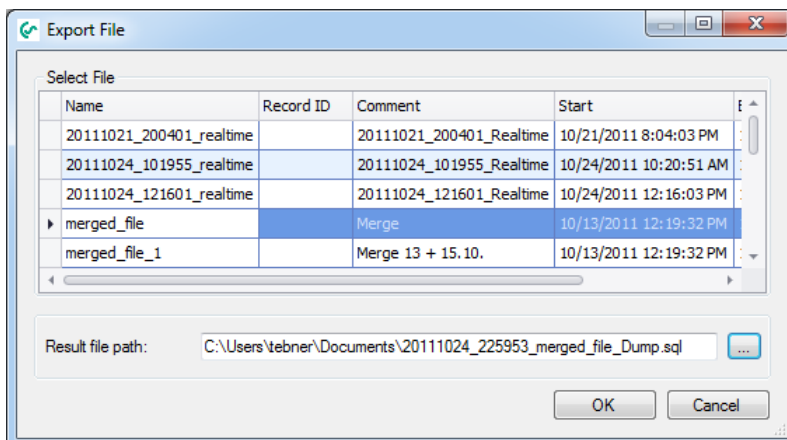


Illustration10: Exporting

The desired file can be selected in the dialogue. The target path must be specified additionally.

3.1.5 Import

In order to be able to use in exported file it must first be imported.

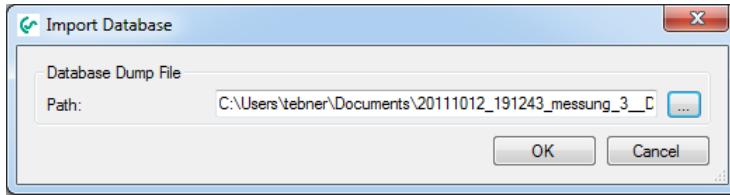


Illustration11: Importing

For this, the exported file must be selected.

3.1.6 Delete

Old data can be deleted through this menu item.
The file can be selected through the following dialog.

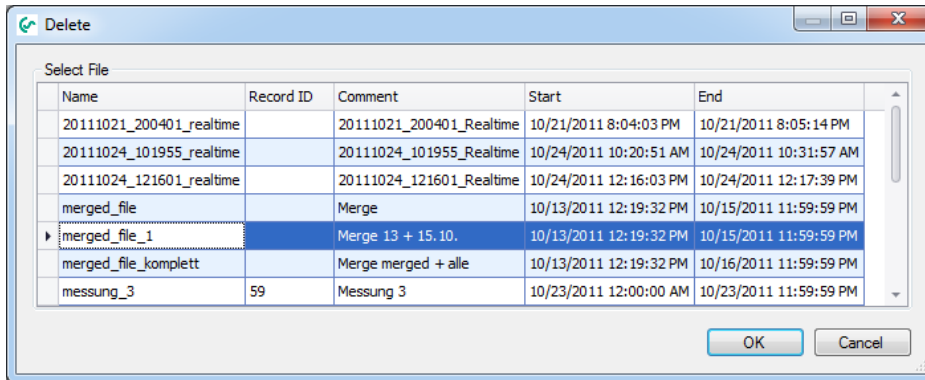


Illustration12: File deletion

CAUTION: If the data was not secured previously with an export, the data will be irrevocably deleted!!!

3.1.7 Exit

Exiting CSSoftBasic

3.2 View menu

- With this menu item a switching to the different views can be performed.

3.3 Info menu

3.3.1 Help

- Call-up of the help file (PDF file).

3.3.2 Language

- Opens the dialogue for the language selection:

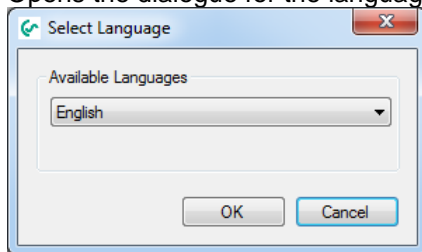


Illustration13: Language selection

- In the ComboBox, all selectable languages will be displayed.
- The application will automatically be restarted after a different language has been selected.

3.3.3 License

- The current licensing information can be accessed via "Info->License".
- Further information regarding the licensing can be found under 7 Licensing.

3.3.4 About

- The current version information will be displayed.

4 Overview

- After the startup the "overview" view will always be displayed.
- If you are in a different view, you can always switch back to the overview through the menu item "View -> Overview".
- In this view the current measurement values of a device can be displayed.
- The real-time data recording can also be started in this view.




Menu item	Toolbar	Action
Edit -> Connect		Establish a connection to a device.
Edit -> Disconnect		Separates the connection.
Edit -> Real-time Data Recording		Real-time data recording

Table 1: Edit overview

- Using the context menu, the following actions can be performed:
 - Establish Connection: Establishes a connection to the device.
 - Separate the connection: Separates the connection.
 - Real-time data recording Starts the real-time data recording

4.1 Display current measurement values

- In order to be able to display the current measurement values of a device, a connection to that device must be established.
- The connection to a device can be established via the corresponding menu item, toolbar or the context menu (see 4 Overview).
- For the selection of the appropriate device the following dialog will be displayed:

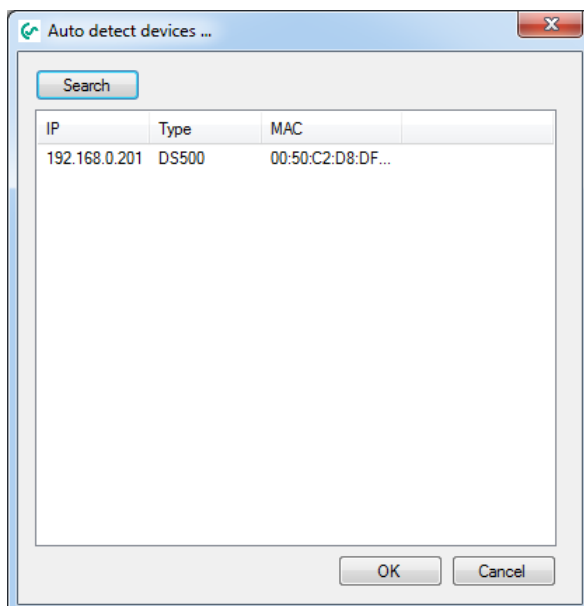


Illustration14: Establish connection

By double-clicking or respectively selecting and confirming with "OK", all the measurement values of the selected device will be displayed.

Connected to device: 192.168.0.201					
Number	Channel	Description	Value	Unit	
A2-1	Kompressor	A2a	14.53	m³/h	
A2-2	Kompressor	A2b	8968	m³	
A2-3	Kompressor	A2c	0.23	m/s	
A4-1	Halle	Taupunkt	5.24	°Ctd	
A4-2	Halle	Feuchte	29.19	%rH	
A4-3	Halle	Temp.	24.51	°C	
B1-1	Kunststoff	Verbrauch	0.00	kW	
B1-2	Kunststoff	Gesamt	0.00	kWh	
B1-3	Kunststoff	Frequenz	0.00	Hz	
B2-1	Kunststoff 2	verbrauch	0.00	kg/h	
B2-2	Kunststoff 2	gesamt	0.00	kg	
B2-3	Kunststoff 2	frequenz	0.00	Hz	

20111024_121601_realtime (10/13/2011 12:19 PM - 10/15/2011 11:59 PM) Connected

Illustration15: Current measurement values

4.2 Record current measurement values

- In order to be able to record the current measurement values to a file, a connection to that device must be established.
In section 4.1 Display current measurement values this item is described step by step.
- The data recording can be started with the appropriate menu item, the toolbar or the context menu.
- After starting the data recording a file name must be specified. The filename must be unique and may only consist of small letters, numbers and underlines. If other characters are entered they will be ignored.
A comment can also be input.

Set ...

Filename
20111024_230930_realtime

Comment
20111024_230930_Realtime

OK Cancel

Illustration16: Real-time data recording naming

- The real-time data is displayed in the following dialog. The operation is set up analogously to the data view. Respective details can be found under 5.1 Diagram View.

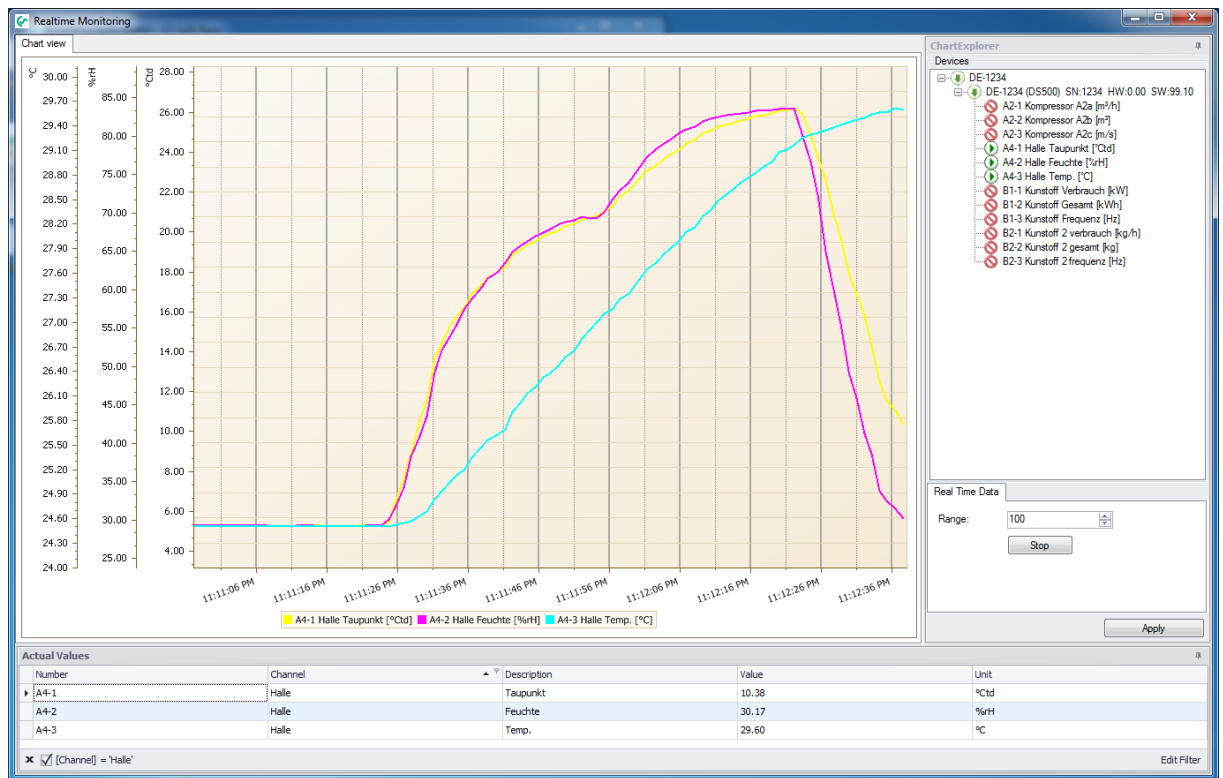


Illustration17: Real-time data recording

- Closing the "Real-time data recording" dialogue will also cancel the data recording. All available channels are always logged independent from the number of currently displayed channels.

5 Data

- With the menu item "View -> Data" a switch to the data view can be performed.
- In the Diagram Explorer, the devices are displayed in a tree structure (range, device, measured value). The range name is automatically assigned and always corresponds to the host name of the device.
- With the Diagram Explorer data rows can be added or deleted by double-clicking on the appropriate measurement value.
- Data rows can also be added/deleted through the context menu.

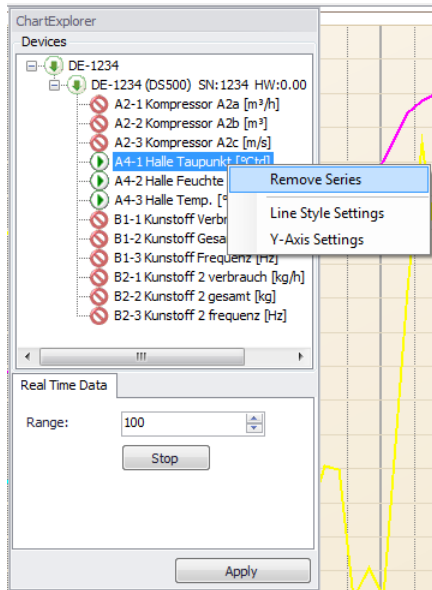


Illustration18: Diagram Explorer

- The line style can be changed via the context menu:

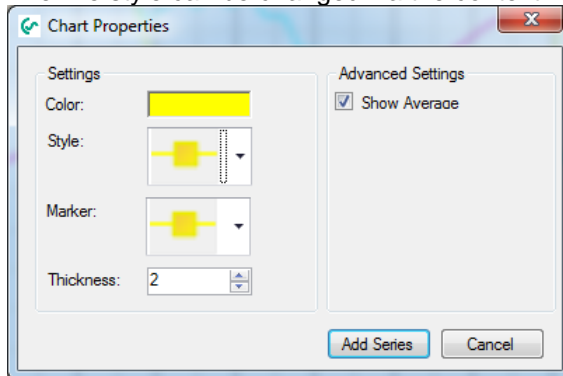


Illustration19: Line Style

- In addition, the setting of the Y-axis is changed via the context menu. An Y-axis is added for each measured variable.

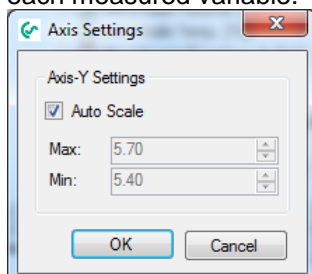


Illustration20: Y-axis scaling

- Depending on the selection of the TabControl in the Diagram Explorer, a different data field is loaded. The data is read optimized from the database (grouping of data - the maximum number of possible data points (screen width)). With the button "<<" or ">>" the same time span before or after is read from the database.
- The Diagram Explorer can be docked to the left or right, or used as a floating window (Windows standard).

5.1 Diagram View

- In the diagram view, the selected range is presented graphically:

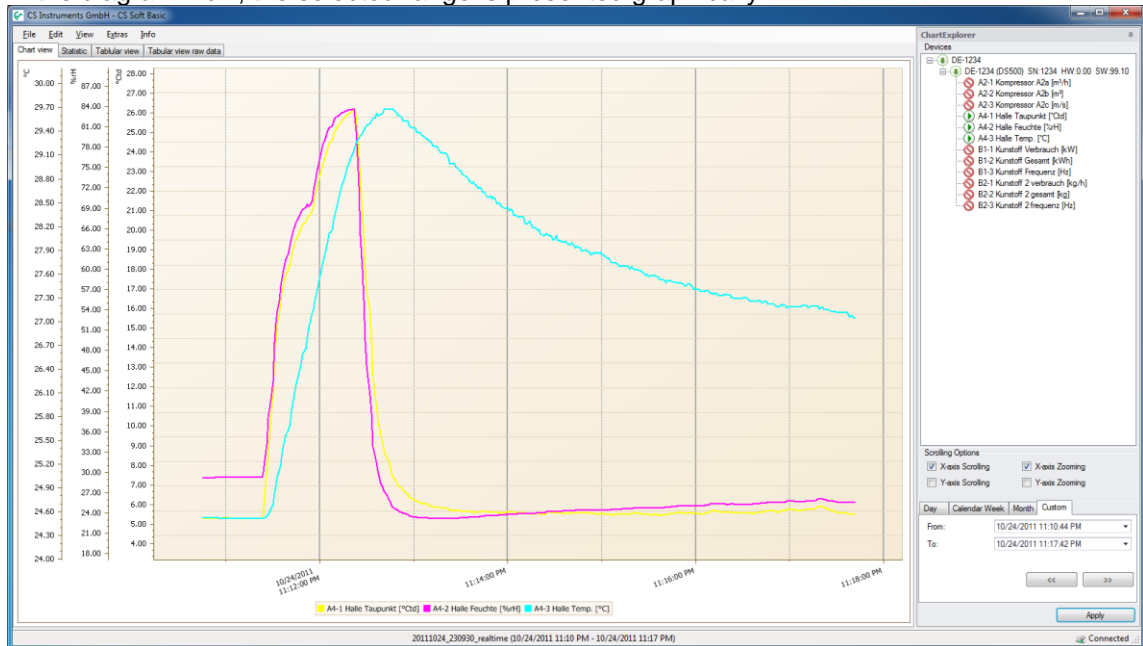


Illustration21: Diagram View

- **Zoom:**
Depending on the selection in the Diagram Explorer the X-axis (X-axis zoom) and/or Y-axis (Y-axis zoom) can be enlarged or reduced by using the scroll wheel. The selection can also be made via the context menu.

By pressing the Shift key and selecting the desired range, the selected range is enlarged.

By pressing the shift key and clicking an enlargement by one increment will be made.

Pressing the ALT key and clicking will effect a reduction.

- **Measuring points:**
If the data does not have to be grouped for displaying, the raw data will be shown. The

measured value will be output in the tooltip.

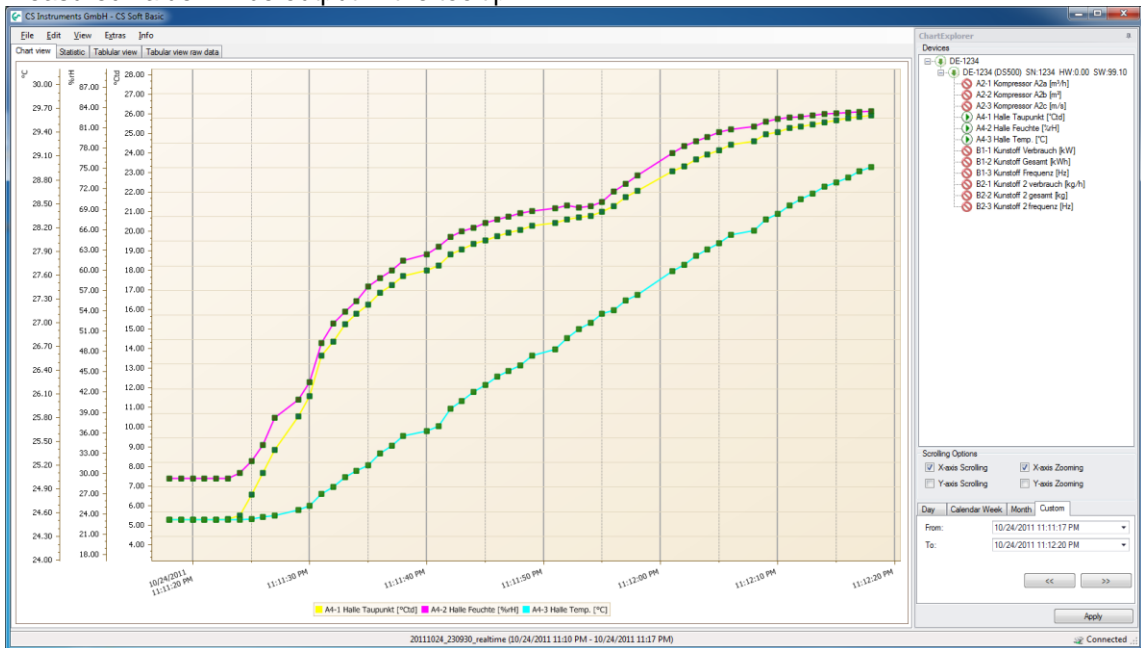


Illustration22: Raw data diagram

- **Scrolling:**
Depending on the selection in the Diagram Explorer a scrolling is carried out along the x-axis (X-axis scrolling) and/or the Y-axis. The selection can also be made via the context menu. Hold down the left mouse button for scrolling.
- **Reset Y-scaling:**
Using the context menu "Zoom -> Reset Y-Axis scaling" all Y-axes are reset to auto scaling.
- **Data reloading:**
After zooming, you can use the context menu "Apply current timespan" to load the maximum amount of data for the selected range.
- **Moving average:**
Using the context menu or the menu "Edit -> Moving average -> Show Moving Average" the moving average can be displayed/suppressed for all data rows. Using the menu "Edit -> Moving average -> Properties" the moving average can be configured.

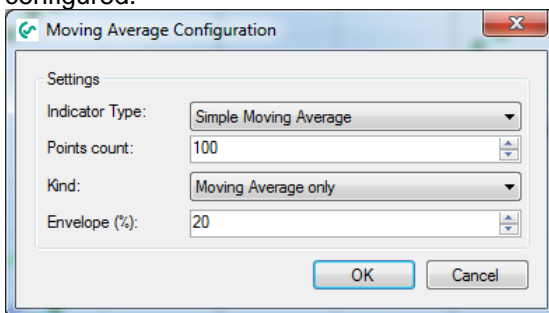


Illustration23: Moving average

- **Export:**
Through the context menu "Export ..." the current diagram can be exported in different document formats (PDF, HTML, MHT, Rich Text, Excel, CSV, text, graphic) or printed through the context menu "File -> Print ...".
- **Settings:**
The settings can be saved, loaded or deleted through the menu "Settings". The settings file contains the currently displayed data rows, the settings (color, width, scale ...) and the moving average.

Under "Settings->Load" only those settings files will be available which were saved with the identical device configuration.

5.2 Statistics

- The loaded files are statistically evaluated and can be displayed through the "Statistics" tab.

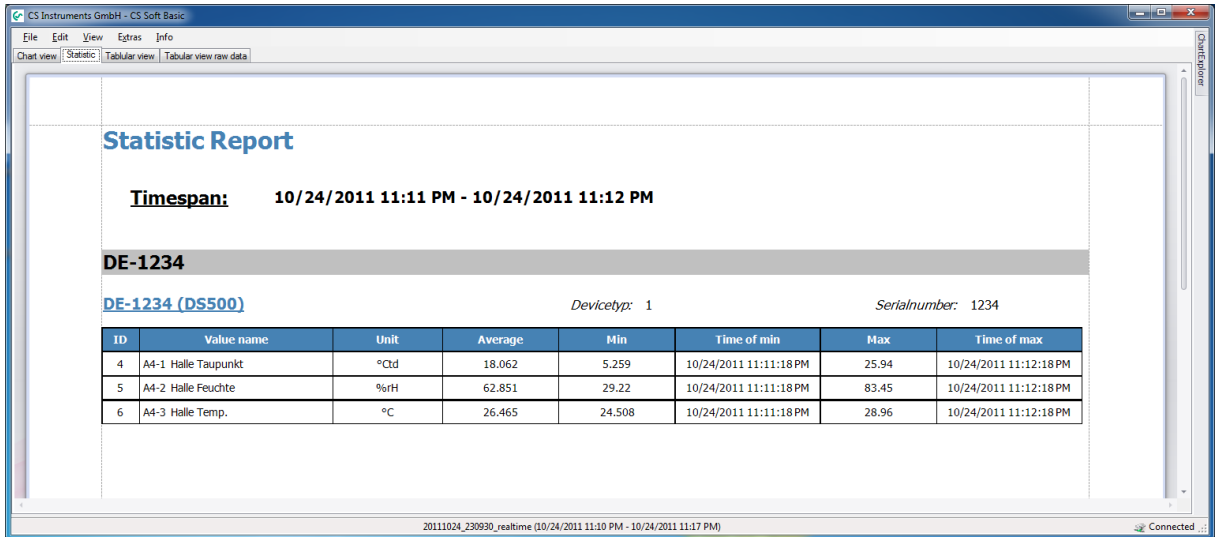


Illustration24: Statistical analysis

- The statistical analysis can be printed with or without a graphic through the context menu or the menu "File -> Print".

5.3 Tabular View

- The loaded measurement values are displayed in a tabular form and can be displayed through the "Tabular view" tab.

Time	DE-1234 (DS500) A4-1 Halle Taupunkt [°Ctd]	DE-1234 (DS500) A4-2 Halle Feuchte [%r H]	DE-1234 (DS500) A4-3 Halle Temp. [°C]
10/24/2011 11:11:19 PM	5.26	29.23	24.51
10/24/2011 11:11:20 PM	5.27	29.24	24.51
10/24/2011 11:11:21 PM	5.27	29.25	24.51
10/24/2011 11:11:22 PM	5.27	29.26	24.51
10/24/2011 11:11:23 PM	5.29	29.28	24.51
10/24/2011 11:11:24 PM	5.36	29.59	24.51
10/24/2011 11:11:25 PM	5.78	30.62	24.51
10/24/2011 11:11:26 PM	6.79	32.35	24.53
10/24/2011 11:11:27 PM	7.84	34.82	24.55
10/24/2011 11:11:28 PM	9.00	38.46	24.57
10/24/2011 11:11:29 PM	10.49	40.79	24.64
10/24/2011 11:11:30 PM	11.43	43.15	24.68
10/24/2011 11:11:31 PM	13.25	48.10	24.81
10/24/2011 11:11:32 PM	14.19	51.41	24.91
10/24/2011 11:11:33 PM	14.99	53.33	25.01

Illustration25: Tabular view

- If a range is marked in the table, the current data range can be loaded additionally through the context "Apply current timespan".
- The table view can be output with the context menu "Export ..." or "File -> Print".

5.4 Raw Data

- In the tab "Tabular view raw data" of the raw data for the selected measurement values are output. If the number of data exceeds the width of the chart, the grouped data is output, otherwise the raw data.

Time	Area	Device	Modbus ID	Channel	Subchannel	Channel name	Value Name	Value	Value Max	Value Min	Unit
10/24/2011 11:11:18 PM	DE-1234	DE-1234 (DS500)	1	A4	1	Halle	Taupunkt	5.2595	5.2595	5.2595	°Ctd
10/24/2011 11:11:19 PM	DE-1234	DE-1234 (DS500)	1	A4	1	Halle	Taupunkt	5.2603	5.2603	5.2603	°Ctd
10/24/2011 11:11:20 PM	DE-1234	DE-1234 (DS500)	1	A4	1	Halle	Taupunkt	5.2677	5.2677	5.2677	°Ctd
10/24/2011 11:11:21 PM	DE-1234	DE-1234 (DS500)	1	A4	1	Halle	Taupunkt	5.2746	5.2746	5.2746	°Ctd
10/24/2011 11:11:22 PM	DE-1234	DE-1234 (DS500)	1	A4	1	Halle	Taupunkt	5.2809	5.2809	5.2809	°Ctd
10/24/2011 11:11:23 PM	DE-1234	DE-1234 (DS500)	1	A4	1	Halle	Taupunkt	5.2951	5.2951	5.2951	°Ctd
10/24/2011 11:11:24 PM	DE-1234	DE-1234 (DS500)	1	A4	1	Halle	Taupunkt	5.4722	5.4722	5.4722	°Ctd
10/24/2011 11:11:25 PM	DE-1234	DE-1234 (DS500)	1	A4	1	Halle	Taupunkt	6.5450	6.5450	6.5450	°Ctd
10/24/2011 11:11:26 PM	DE-1234	DE-1234 (DS500)	1	A4	1	Halle	Taupunkt	7.6641	7.6641	7.6641	°Ctd
10/24/2011 11:11:27 PM	DE-1234	DE-1234 (DS500)	1	A4	1	Halle	Taupunkt	8.8521	8.8521	8.8521	°Ctd
10/24/2011 11:11:29 PM	DE-1234	DE-1234 (DS500)	1	A4	1	Halle	Taupunkt	10.5475	10.5475	10.5475	°Ctd
10/24/2011 11:11:30 PM	DE-1234	DE-1234 (DS500)	1	A4	1	Halle	Taupunkt	11.5694	11.5694	11.5694	°Ctd
10/24/2011 11:11:31 PM	DE-1234	DE-1234 (DS500)	1	A4	1	Halle	Taupunkt	13.6708	13.6708	13.6708	°Ctd
10/24/2011 11:11:32 PM	DE-1234	DE-1234 (DS500)	1	A4	1	Halle	Taupunkt	14.3766	14.3766	14.3766	°Ctd
10/24/2011 11:11:33 PM	DE-1234	DE-1234 (DS500)	1	A4	1	Halle	Taupunkt	15.2716	15.2716	15.2716	°Ctd
10/24/2011 11:11:34 PM	DE-1234	DE-1234 (DS500)	1	A4	1	Halle	Taupunkt	15.7858	15.7858	15.7858	°Ctd
10/24/2011 11:11:35 PM	DE-1234	DE-1234 (DS500)	1	A4	1	Halle	Taupunkt	16.2461	16.2461	16.2461	°Ctd
10/24/2011 11:11:36 PM	DE-1234	DE-1234 (DS500)	1	A4	1	Halle	Taupunkt	16.8509	16.8509	16.8509	°Ctd
10/24/2011 11:11:37 PM	DE-1234	DE-1234 (DS500)	1	A4	1	Halle	Taupunkt	17.2542	17.2542	17.2542	°Ctd

Illustration26: Raw Data

- The raw data can be output with the context menu "Export ..." or "File -> Print".
- With the context menu or the table heading the raw data can be output:

a) sorted

Time	Area	Device	Modbus ID	Channel	Subchannel	Channel name	Value Name	Value	Value Max	Value Min	Unit
10/24/2011 11:11:18 PM	DE-1234	DE-1234 (DS500)	1	A4	1	Halle	Taupunkt	5.2595	5.2595	5.2595	°Ctd
10/24/2011 11:11:18 PM	DE-1234	DE-1234 (DS500)	1	A4	2	Halle	Feuchte	29.2195	29.2195	29.2195	%rH
10/24/2011 11:11:18 PM	DE-1234	DE-1234 (DS500)	1	A4	3	Halle	Temp.	24.5080	24.5080	24.5080	°C
10/24/2011 11:11:19 PM	DE-1234	DE-1234 (DS500)	1	A4	1	Halle	Taupunkt	5.2603	5.2603	5.2603	°Ctd
10/24/2011 11:11:19 PM	DE-1234	DE-1234 (DS500)	1	A4	2	Halle	Feuchte	29.2250	29.2250	29.2250	%rH
10/24/2011 11:11:19 PM	DE-1234	DE-1234 (DS500)	1	A4	3	Halle	Temp.	24.5080	24.5080	24.5080	°C

Illustration27: Chronological sorting ascending

b) filtered

Time	Area	Device	Modbus ID	Channel	Subchannel	Channel name	Value Name	Value	Value Max	Value Min	Unit
10/24/2011 11:11:18 PM	DE-1234	DE-1234 (DS500)	1	A4	1	Halle	Taupunkt	5.2595	5.2595	5.2595	°Ctd
10/24/2011 11:11:18 PM	DE-1234	DE-1234 (DS500)	1	A4	2	Halle	Feuchte	29.2195	29.2195	29.2195	%rH
10/24/2011 11:11:18 PM	DE-1234	DE-1234 (DS500)	1	A4	3	Halle	Temp.	24.5080	24.5080	24.5080	°C
10/24/2011 11:11:19 PM	DE-1234	DE-1234 (DS500)	1	A4	1	Halle	Taupunkt	5.2603	5.2603	5.2603	°Ctd
10/24/2011 11:11:19 PM	DE-1234	DE-1234 (DS500)	1	A4	2	Halle	Feuchte	29.2250	29.2250	29.2250	%rH

Channel = A4

Illustration28: Filter - channel "A4"

c) grouped

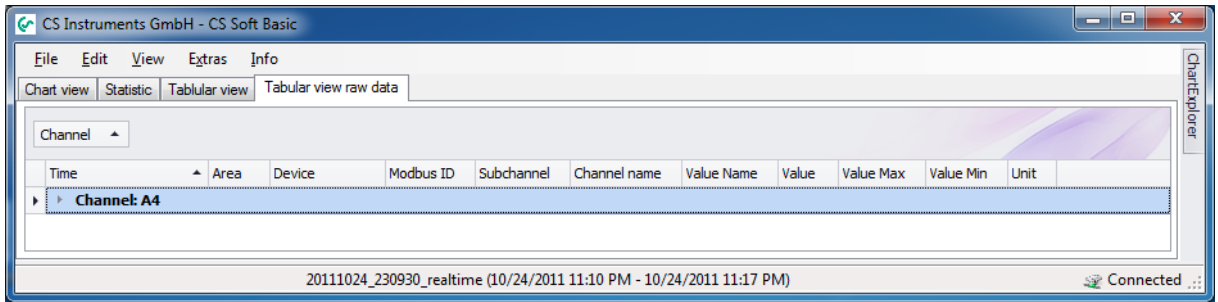


Illustration29: Grouping "channel"

6 Analysis

- With the menu item "View -> Analysis" the consumption analysis can be started.

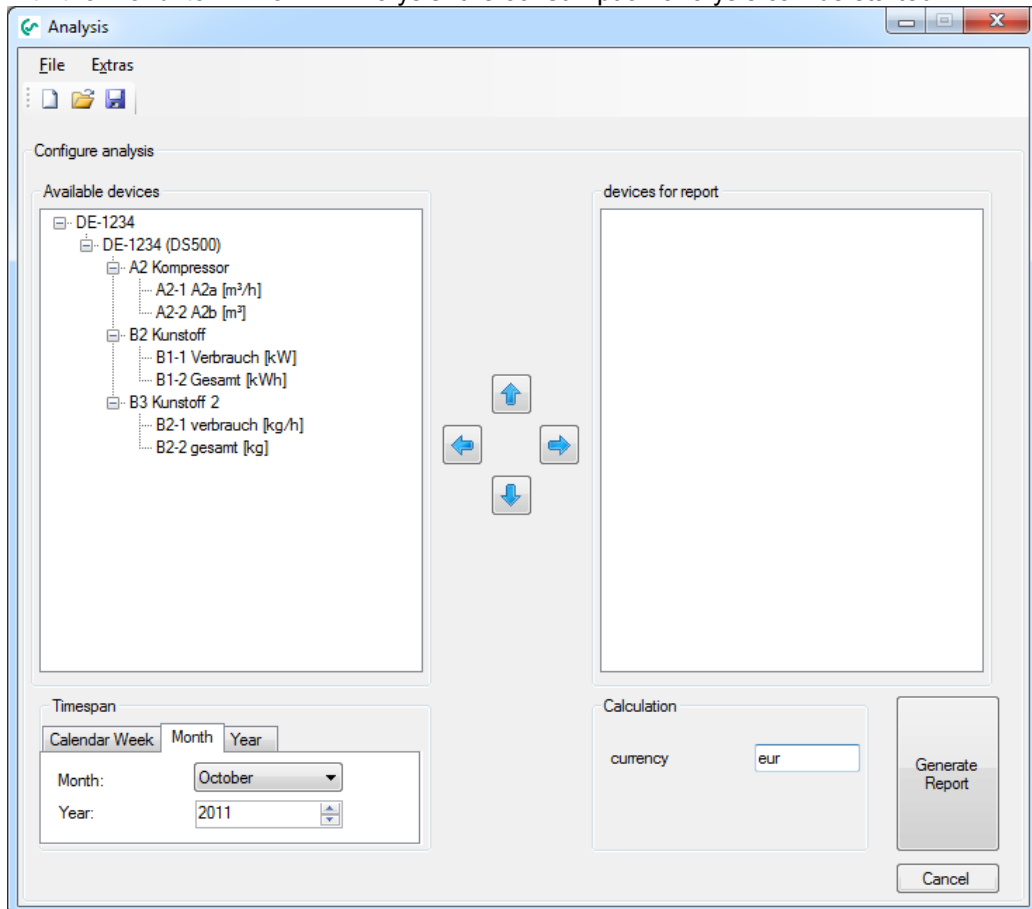


Illustration30: Consumption Analysis

- In the left area all the devices with consumption sensors are listed which are not considered during the consumption analysis.

- In the right area all the devices with consumption sensors are listed which are evaluated during the consumption analysis.
- By double-clicking complete ranges or just individual units or measuring channels can be moved from left to right or from right to left. Likewise be selected range/device/measuring channel can be marked and moved with the "left arrow" or "right arrow" buttons.
- The order of the ranges, devices and measuring channels can also be defined. For this, use the "up arrow" or "down arrow" buttons.
- Through the menu item "Extras->Configuration" a price per unit as well as the rate selection/rate definition can be defined for every consumption channel.

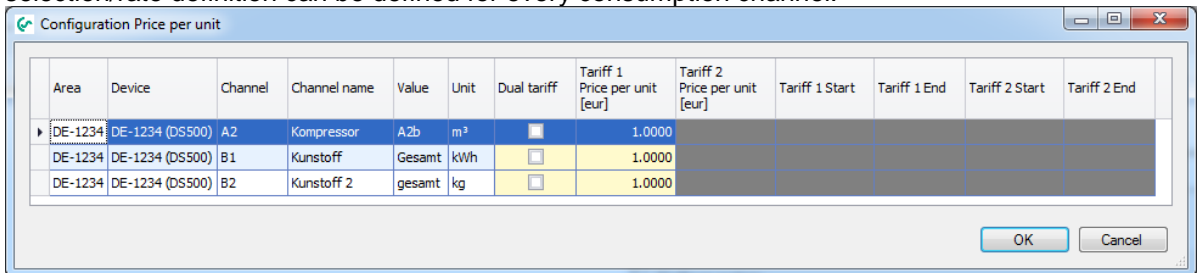


Illustration31: Consumption Analysis configuration

- **Please observe - that devices which are located in a main or sum branch may not be included if a correct sum-calculation is to be performed.**
- **Additionally, in order to perform a correct sum calculation only consumption variables with the same unit may be included.**
- The configuration can be saved with the menu "File->Save" or with the respective icon. At a later point in time a saved configuration can be loaded through "File-> Open". The file extension ".csua" is used for the configuration files of the consumption analysis. A new configuration is created with the menu "File->New".
- Depending on the selection of the tab control, a weekly, monthly or annual report will be created.

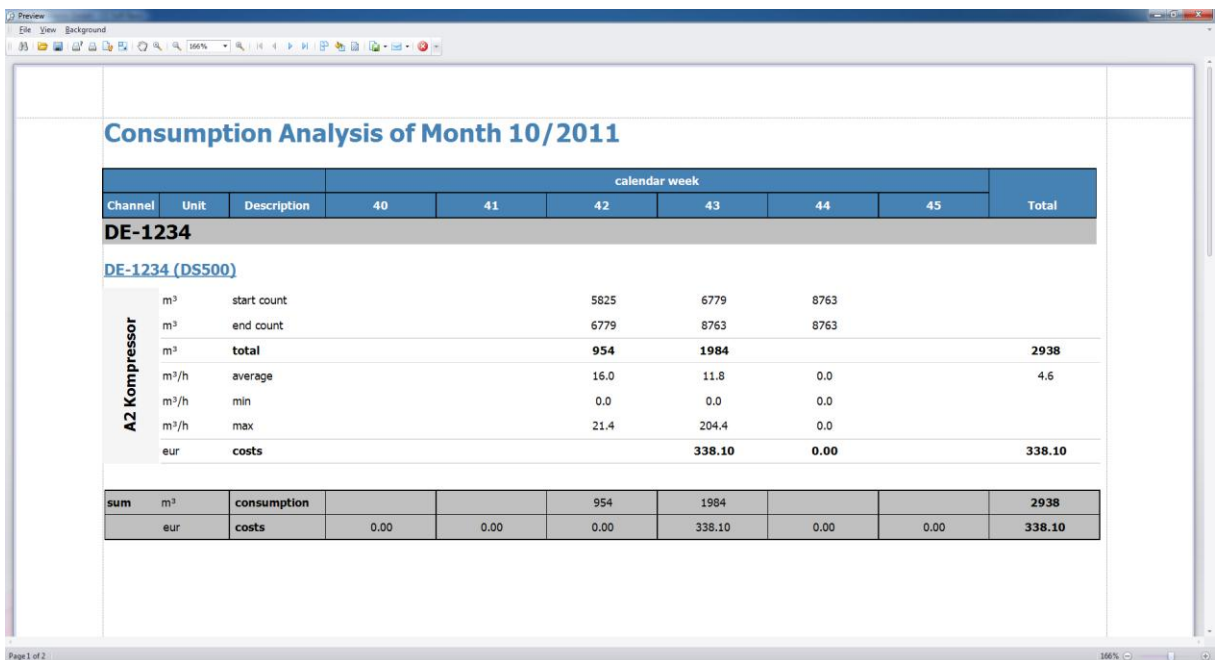


Illustration32: Consumption Analysis

- Through the menu "File" the preview can be output in different document formats (PDF, HTML, MHT, Rich Text, Excel, CSV, text, graphic) or printed.

7 Licensing

- After the installation you will automatically have a test version which is valid for 10 days. At the start of CSSoftBasic the remaining evaluation time will be displayed in the following dialog.



Illustration33: Info test version

- With "?" you can select a different language.
- If you downloaded the software from our homepage you can purchase a serial number in our online shop with the button "Purchase a serial number".
- If you have a serial number, you can activate the software.
- There are four ways to activate the software:

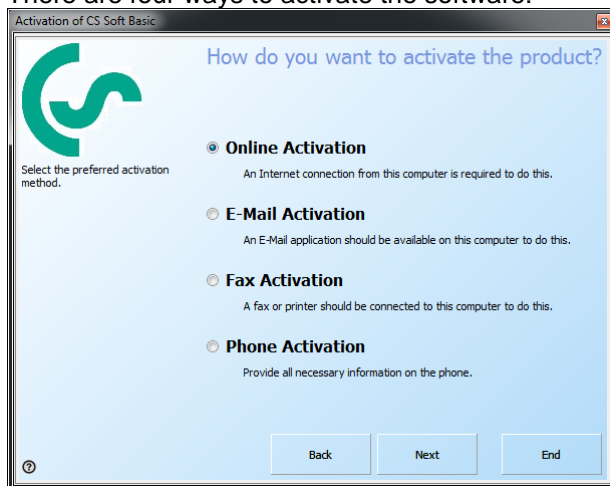


Illustration34: Activation options

- Please use in the "Online Activation" option if you're computer has an Internet connection. If your computer does not have Internet access, you can use "E-mail Activation" to activate any computer via e-mail. With the e-mail the activation code will be sent to you within 15 minutes.
- Please use the registration by fax or telephone only if you do not have Internet access.

- In the next step (independent from your activation option) please enter your activation data.

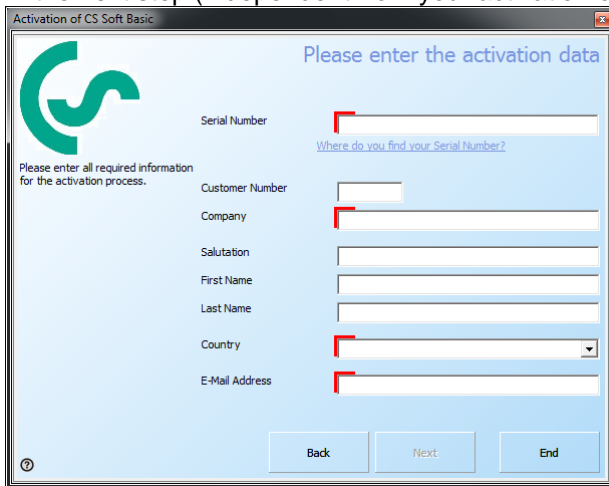


Illustration35: Activation data

- With the "Online Activation" the registration is automatically completed, otherwise you must enter the activation key that has been sent to you at a later point in time through "Info->Licence button "Activation Key".

If the software was activated online, there is the possibility of using the button "Transfer License" to transfer the software from computer A to computer B.

8 Support and Service

If you have questions about our products, require technical support for the installation or use of our software or if you would like to give us a suggestion for improvements, CS Instruments GmbH offers you the following support options:

Please contact us preferably via the following Internet site:

<http://support.cs-instruments.com>

On this website CS Instruments GmbH has set up a forum for its customers. Here you can benefit from the fact that perhaps another customers have asked the same question and we have already posted the answer under the heading "Frequently Asked Questions" (FAQ). Beyond that, you also have the opportunity to directly address a question to us here.

If you currently do not require any support but are still interested in our products and would like to follow the development on this website, we will provide the interested reader with the opportunity to receive information about new posts in the forum via RSS feeds.

The link to our RSS feed:

<http://support.cs-instruments.com/posts.rss>

Of course, you can also reach us by e-mail or phone. For this, please use the following e-mail address or the following phone number.

support@cs-instrumnts.com

(Zen desk - Helpdesk)

+49 461 7002025

Phone support and Teamviewer access
(15 minutes = 30 Euro, minimum 45min)

Please don't hesitate to send us a message. We will answer all inquiries within 24-48 hours.