

Interface Box Installation Guide

This guide details the procedure for installing the Interface Box driver on your computer.

1. System Requirements

You should make sure your computer meets the following system requirements before installing the Interface Box driver.

Supported Operating Systems

This driver can be installed on Microsoft Windows 98, Me, 2000, XP and 2003.

Minimum Hardware Configurations

Processor: 500 MHz Intel Pentium III workstation or equivalent

Memory: 256 MB

Disk space: 200 MB of free disk space

2. Installing the Driver

Before installing the driver, please make sure you are logged on to Windows as an Administrator. Administrator privileges are required to install a device driver. Also, please make sure you have copied or downloaded the required driver files to your computer, or you have inserted the CD containing the driver files into your computer's CD drive. This guide assumes that you have placed the folder "CS USB service cable driver V1.00" containing the driver files on your computer's desktop.

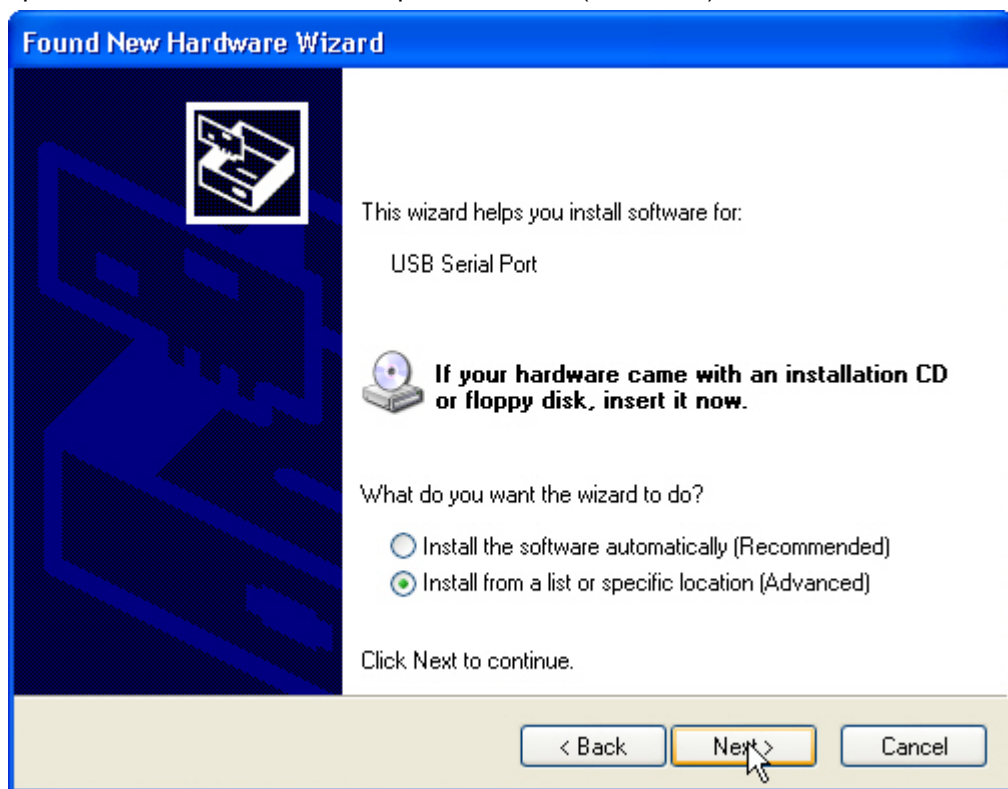
To install the Interface Box driver, do the following:

- Connect the USB port of the Interface Box to one of your computer's USB ports using a USB cable.
Windows will detect the new device and launch the Found New Hardware Wizard if the Interface Box driver has never been installed on your computer before. If your computer already has this driver installed, Windows will start using this driver automatically and will not launch the Found New Hardware Wizard.

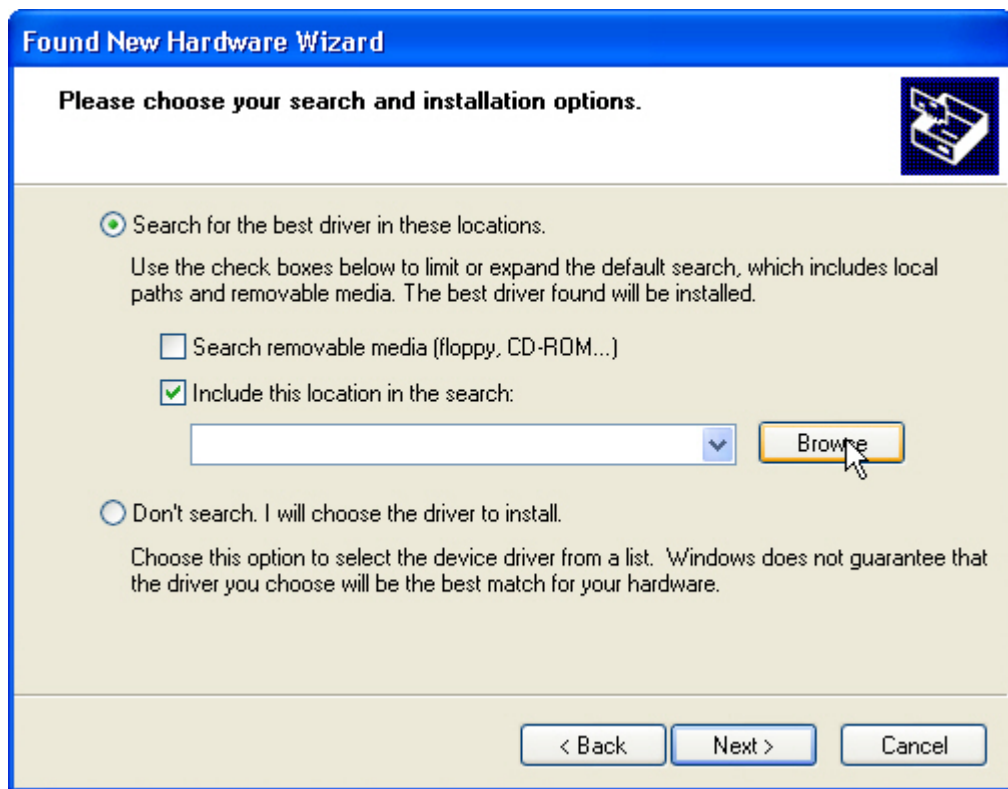
- On the Found New Hardware Wizard, choose "No, not this time" and click "Next".



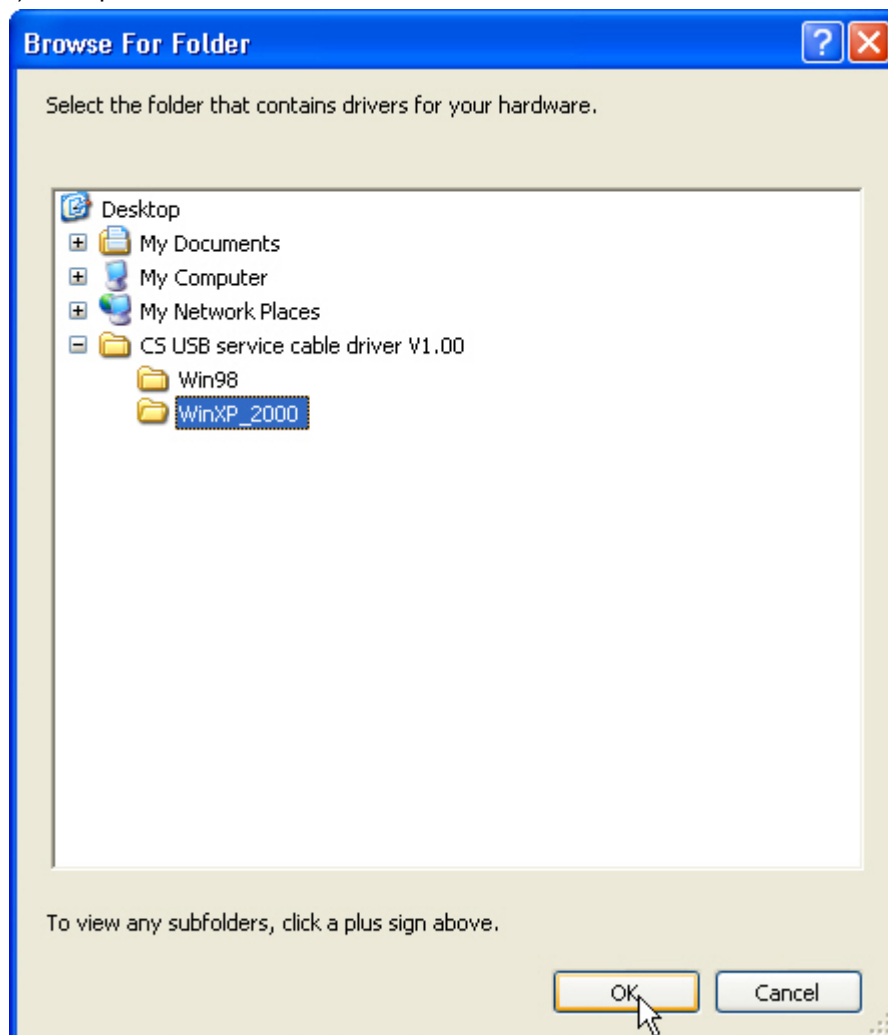
- At the next step, choose "Install from a list of specific location (Advanced)" and click "Next".



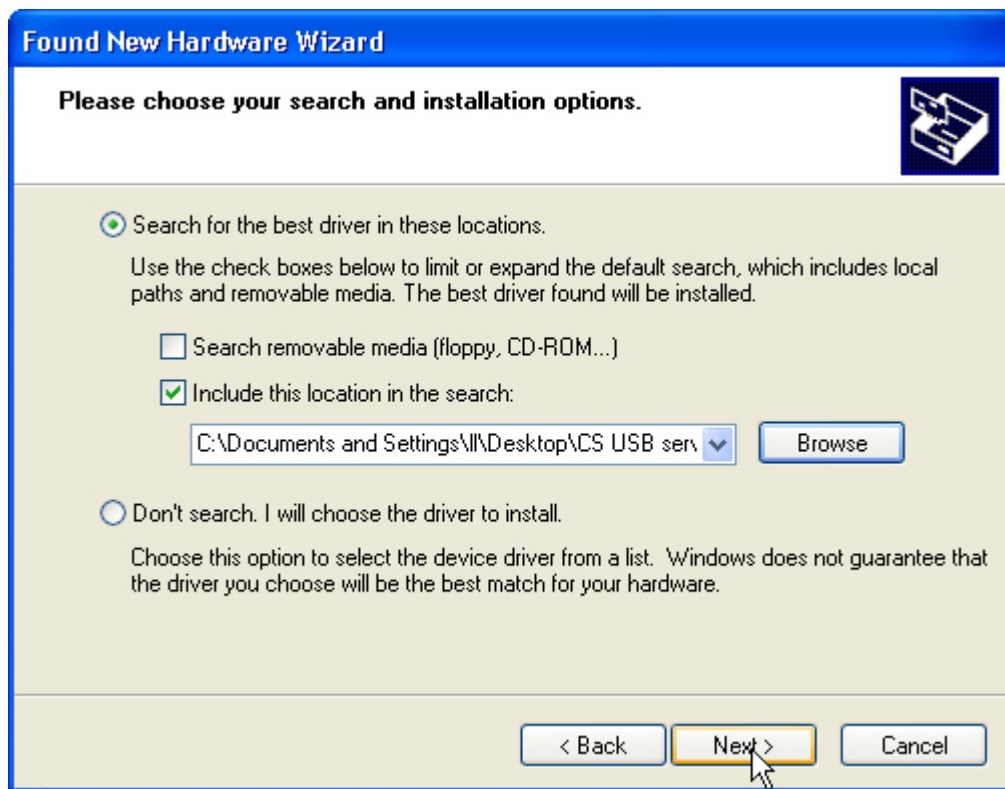
- Choose "Search for the best driver in these locations", check "Include this location in the search:" box and click "Browse".



- Select the folders "CS USB service cable driver V1.00" and "WinXP_2000" (or "Win98" in case you are using Windows 98 or Me) in sequence and click "OK".



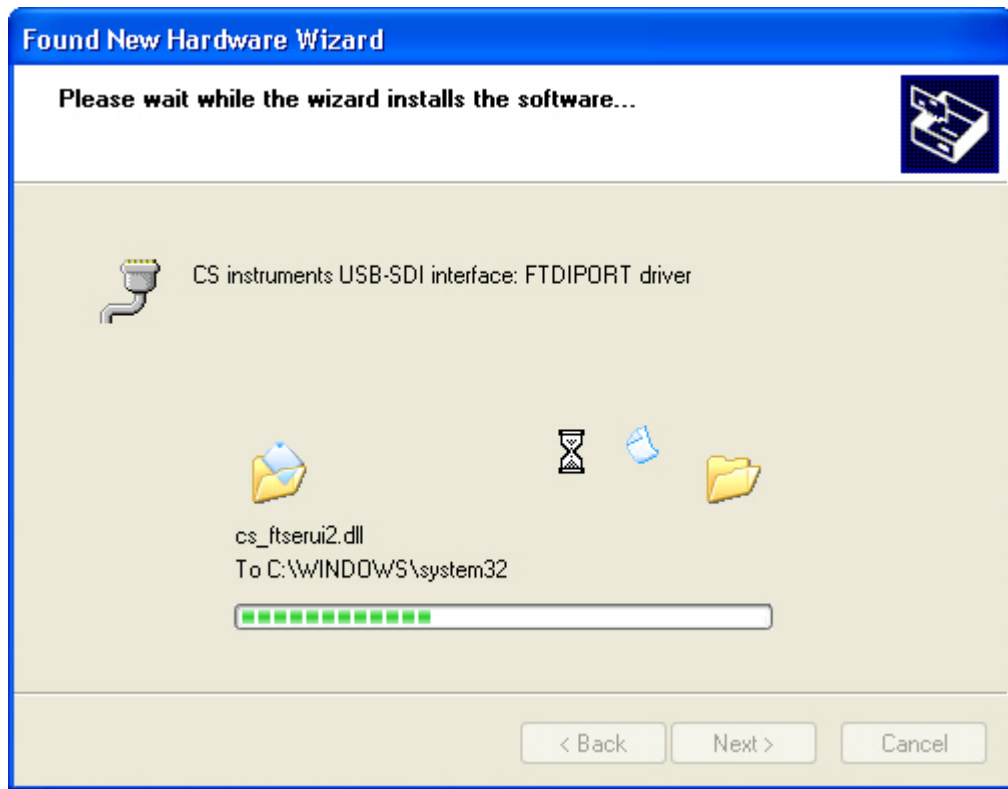
- Click "Next" on the main dialog.



- When you see the warning dialog below, just click "Continue Anyway".



The wizard will then install the driver.



When the installation is completed, you will see this:

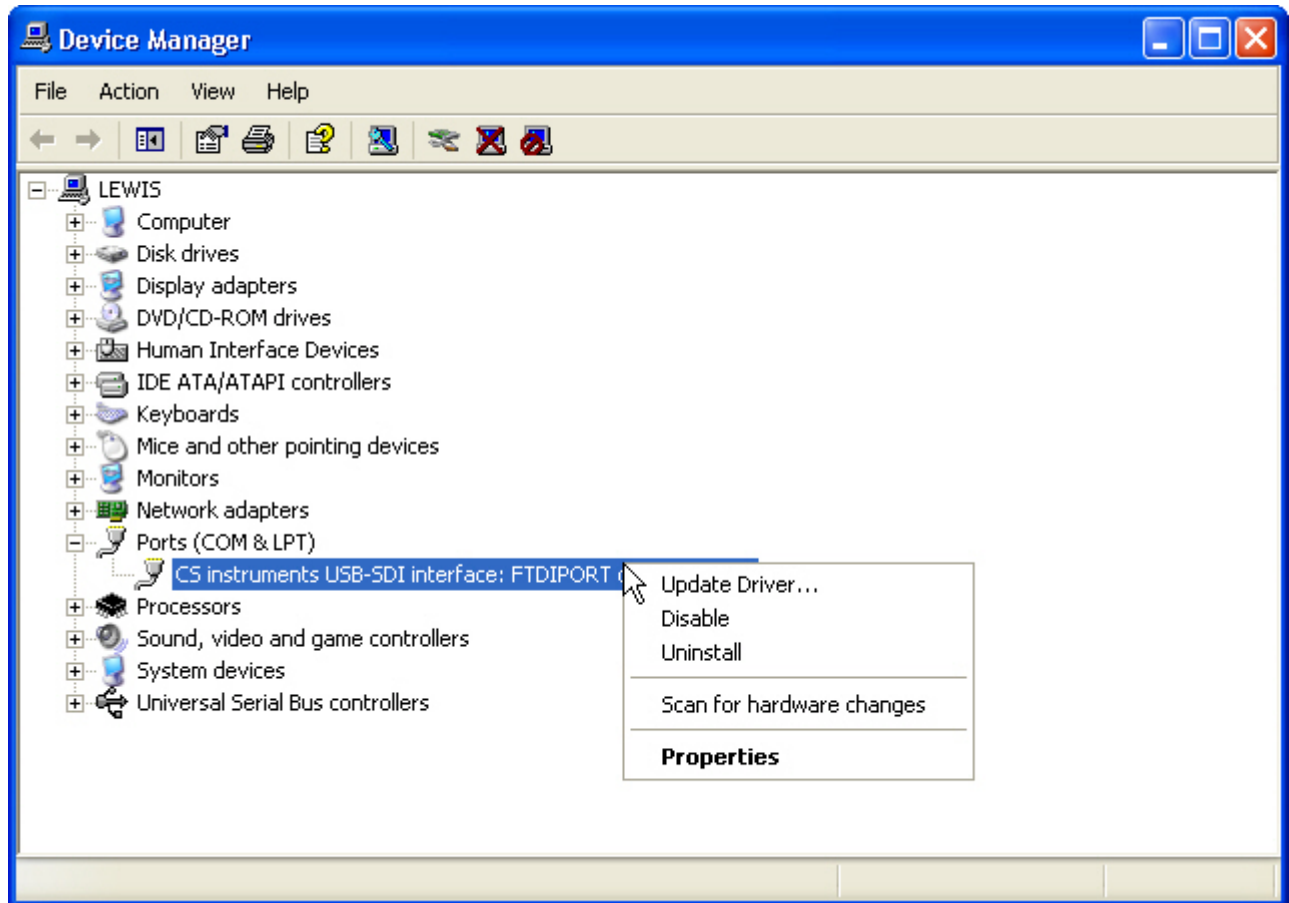


3. Uninstalling the Driver

You may uninstall the Interface Box driver. Just follow these steps:

- ✧ Make sure the Interface Box is connected to your computer.
- ✧ Right-click the My Computer icon on your desktop and select Properties to open the "System Properties" dialog.
- ✧ On the "System Properties" dialog, select the Hardware tab and click "Device Manager" button.
- ✧ Expand "Ports (COM & LPT)" section in the list to find the device "CS instruments USB-SDI interface".
- ✧ Right-click the device and select Uninstall.

- ✧ Click OK when the “Confirm Device Removal” dialog shows up.
- ✧ Disconnect the Interface Box from your computer.



After the uninstallation, you can follow the same instructions above to reinstall the Interface Box driver without restarting your computer.