

# Installation guide and short form instruction manual CS Soft Professional for DS 300

## 1. System requirements

### Supported operating systems:

- Microsoft Windows 2000, XP, 2003 and VISTA

### Minimum Hardware:

- **Processor:** 500 MHz Intel Pentium III Workstation or equivalent
- **Memory:** 256 MB
- **Disk space:** 200 MB of free disk space

## 2. Preparation of the installation of CS Soft Professional software

- 2.1 The installation of the CS Soft software is only possible with administrator privileges. Please turn to the administrator of your company in order to ensure that you have those privileges.
- 2.2 Copy the folder "CS USB Driver" from the CD on your computer.  
Connect the USB interface of the DS 300 with the USB cable (A-A) to one of your PC USB interfaces. Windows will find the new device and the "assistant searching for new hardware" appears. When required please follow the Installation Guide "DS 300 USB Driver Installation Guide".


## 3. CS Soft Professional installation


- 3.1 Please insert the CD.

If you also have ordered the Configuration software for the DS 300, the following choice window appears: Please select the software you want to install.



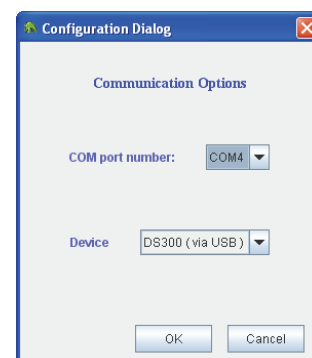
You will be guided through the installation, please select the next step of the program, i. e. please click to "Next".

The installation program automatically issues this symbol  on your screen. Please select "Create a desktop icon".

- 3.2 Before starting the program make sure that the connection cable between DS 300 and the PC is connected.
- 3.3.1 Now you can start the program by double click to the CSSoft symbol . In case of the initial start of the program the configuration dialogue will occur. Please select the device DS 300.

Remark:

For the DS 300 you don't need to enter a Com port number



## 4 Start of the program

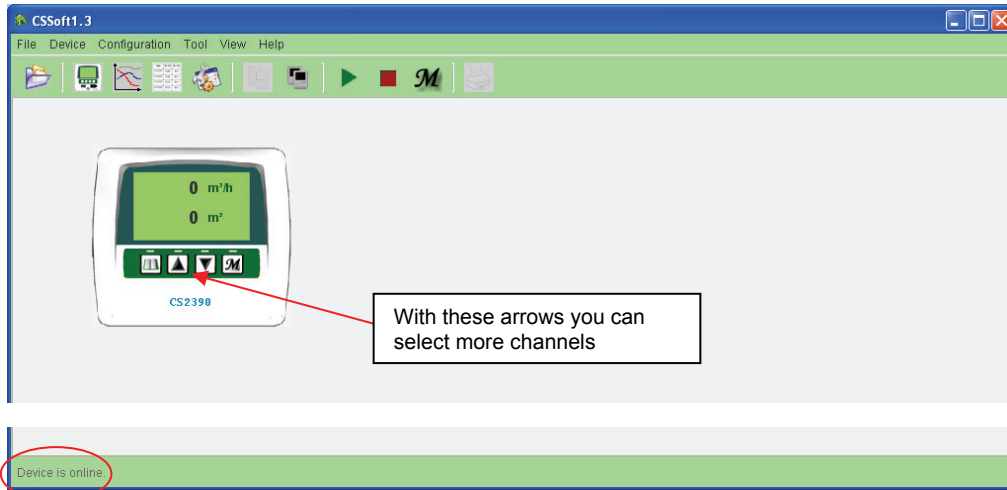
### Start screen

After confirming with "OK" key the main screen of CS Soft will occur.

Please select the menu "instrument" and click to "set up online access".

Access will be set up, the measuring instrument is online.

**Annotation:** The menu "instrument" is not active in case of the graphic and table view.



## 5 Short form description of the functions of CS Soft Professional

In the menu "help" of the main menu screen you will find a help file with detailed descriptions of all important functions as well as a tutorial program.

Function	Description of the function
<b>3.1 File</b>	
Open File.....	Choose and open a file
Import.....	Choose and import a CS- file ( with "Export Data" created file *.csd )
Export Data.....	select a file and export it into an Excel file or a CS-file
Print.....	Print a hard copy , only active in the graphic or table mode
Exit.....	Stop program
<b>3.2 Device</b>	
	(some functions are not active)
Go online.....	Building up a connection to DS 300
Go offline.....	Disconnect the device
Read Recorded Data from Device.....	Recorded data from the DS 300
<b>3.3 Configuration</b>	
Device	
Basic.....	Input of a device name possible
Channels.....	Indication of the available channels of all probes with channel no., unit, address and resolution
Communication.....	Choose ComPort and Device
View.....	Only at the graphic or table view
<b>4. Tool</b>	
Start Recording.....	Enter sample rate (> 5 Sec.)
Stop Recording.....	Enter file name or accept default file name
Compact Database.....	Function for compacting database
<b>5. View</b>	
	Online view of current values
	Table view of chosen file
	Graphic view of chosen file
<b>6. Help</b>	
	Help (detailed help for all functions)
	Tutorial
	About
<b>Special Functions</b>	
	<b>Graphic view</b> , press the right mouse button:
	Insert comments
	View settings
	Scaling down (reset zoom)
<b>Zoom Function</b>	
	<b>Graphic view</b> , with pressed left mouse button choose the zoom area
<b>Graphic Display</b>	
	max. 2 different units presentable