

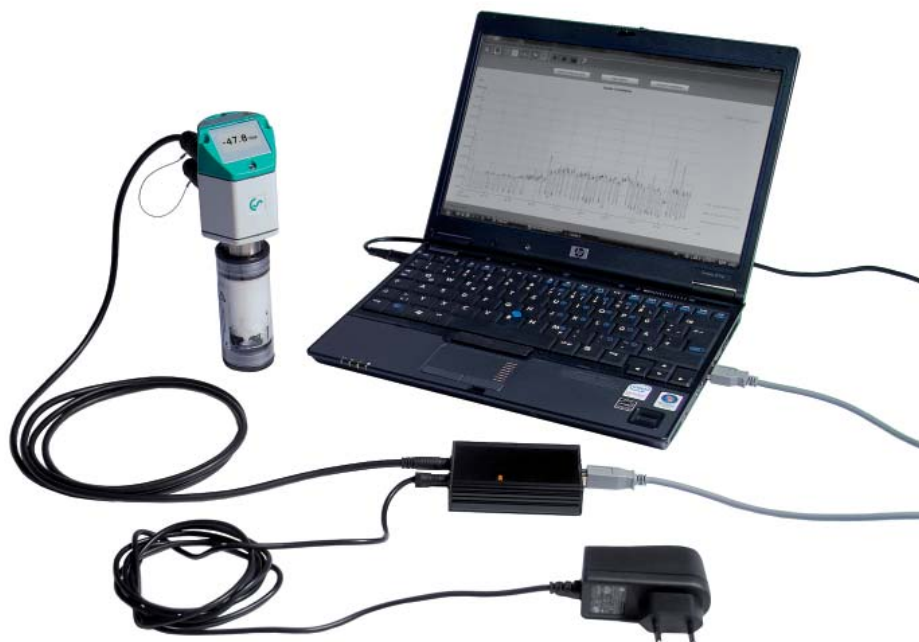
Accessories for dew point measurement and calibration

CS Service Software

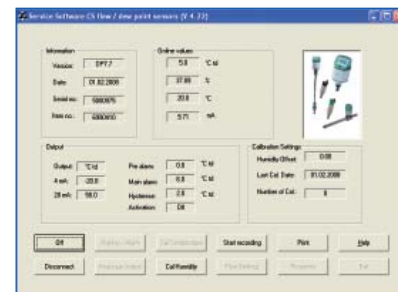
for FA/VA 400 sensors including PC connection set, USB adapter and interface adapter to the sensor as well as CS Soft Professional software for data recording.

The humidity sensors FA 400, FA 410, FA 415, FA 416 can be connected to the PC and the following adjustments can be carried out by means of the CS Service Software:

- Scaling of the 4...20 mA analogue output
- Selecting the units: % RH, °C_{td}, g/m³, mg/m³, ppm V/V
- Reading out of: Version no., production date, serial no., date of last calibration
- Adjustment of the alarm limits
- Single-point calibration (adjustment) - for this purpose a reference measuring instrument is required



By means of the CS Soft Professional software the measured data can be read out online at the PC. It can be stored and evaluated in graphic and in table form.



The right measuring chamber for each measuring task:



Standard measuring chamber for compressed air up to 16 bar
Order no. **0699 3390**



Measuring chamber for atmospheric dew point
Order no. **0699 3690**



High-pressure measuring chamber for compressed air up to 350 bar*
Order no. **0699 3590**



Measuring chamber for respiratory air bottles up to 350 bar*
Order no. **0699 3790**



Measuring chamber for granulate dryers up to 250 mbar
Order no. **0699 3490**

* in case of pressures higher than 50 bar please order special version FA 400 / FA 410.

Mounting recommendation

The dew point meters can be mounted directly into the air stream.

However, we recommend always to use a screwable measuring chamber.



Screwable measuring chamber

Advantage: Easy installation via fast coupling