



# Manual

## Revision E

<b>File:</b>	Manual_OMServerGUI.docx
<b>last saved:</b>	2014-10-02 09:17

## Change sheet

Audit	Alteration	Date	Processor
A	First edition	4/23/2011	TE
B	<ul style="list-style-type: none"><li>• Menu item "Database" added</li><li>• Note: User Administration (assigned areas)</li><li>• New Structure Info-&gt; Help, Info-&gt; About</li><li>• Info -&gt; Licence new</li><li>• New licensing</li></ul>	5/26/2011	TE
C	<ul style="list-style-type: none"><li>• Welcome, Support</li></ul>	6/6/2011	TE
D	<ul style="list-style-type: none"><li>• Extended functionalities</li></ul>	4/16/2013	AA
E	<ul style="list-style-type: none"><li>• Support and Service</li></ul>	10/2/2014	TE

Dear customer,

every year thousands of customers purchase our high quality products.

With very good reason:

- Our products offer a very good price/performance ratio. Reliable quality at a fair price.
- With a professional experience of over 20 years, we are able to find the optimal solution for your measuring task.
- Our high quality standards.
- Of course, all of our equipment bears the CE mark required by the EU.
- Calibration certificates, seminars and consulting.
- After the purchase we will not leave you standing in the rain.

Our service ensures rapid assistance for you.

Table of contents

<b>Change sheet</b> .....	<b>2</b>
<b>Illustration Index</b> .....	<b>5</b>
<b>Table Index</b> .....	<b>5</b>
<b>1 Introduction</b> .....	<b>6</b>
<b>2 Configuration</b> .....	<b>6</b>
2.1 Preparation.....	6
2.2 Login.....	6
2.3 Modbus.....	6
2.3.1 Areas.....	6
2.3.2 Devices .....	7
2.3.3 Values .....	9
2.3.4 Cycle time .....	11
2.4 Configuration .....	11
2.4.1 Mail .....	11
2.4.2 SMS Gateway.....	12
2.4.3 Database.....	12
2.4.4 Database Backup .....	13
2.4.5 Client-Server Communication.....	13
2.4.6 Alarm text.....	14
<b>3 Test</b> .....	<b>14</b>
3.1 Send test mail .....	14
3.2 Send test SMS .....	14
3.3 Database Memory.....	14
<b>4 User administration</b> .....	<b>15</b>
<b>5 Service</b> .....	<b>15</b>
<b>6 Registration</b> .....	<b>16</b>
<b>7 Database</b> .....	<b>16</b>
7.1 New .....	16
7.2 Export.....	17
7.3 Import.....	17
7.4 Restore.....	17
7.5 Compress .....	17
7.6 Delete.....	18
7.6.1 Data .....	18
7.6.2 Database.....	18
<b>8 Info</b> .....	<b>18</b>
8.1 Help .....	18
8.2 About.....	18
8.3 Licence.....	18
<b>9 Licensing</b> .....	<b>19</b>
<b>10 Support and Service</b> .....	<b>21</b>

## Illustration Index

Illustration 1: Modbus Areas .....	6
Illustration 2: Auto-detect devices ... ..	7
Illustration 3: Select device .....	7
Illustration 4: Modbus Devices.....	7
Illustration 5: Auto-detect ModbusID .....	8
Illustration 6: Modbus ID selection .....	8
Illustration 7: Modbus Devices.....	9
Illustration 8: Auto-detect values ... ..	9
Illustration 9: Select measurement value .....	10
Illustration 10: Channel assignment .....	10
Illustration 11: registered measurement values.....	11
Illustration 12: Mail Configuration .....	11
Illustration 13: SMS gateway configuration smstrade/smskaufen.....	12
Illustration 14: SMS Gateway General Configuration.....	12
Illustration 15: Database Backup.....	13
Illustration 16: Configuring the client-server communication.....	14
Illustration 17: Configuration of alarm texts .....	14
Illustration 18: Database memory check .....	15
Illustration 19: User administration .....	15
Illustration 20: Main Window.....	16
Figure 21 : New database .....	16
Illustration 22: Database export.....	17
Illustration 23: Database import.....	17
Illustration 24: Database restore.....	17
Illustration 25: Data Compression .....	17
Illustration 26: Delete old data .....	18
Illustration 27: Database deletion .....	18
Illustration 28: Trial version info.....	19
Illustration 29: Activation options .....	19
Illustration 30: Activation data.....	20

## Table Index

TOC

# 1 Introduction

The OMServer (Windows service) is configured with the OMServerGUI.

## 2 Configuration

### 2.1 Preparation

- 1) In the first step configure the equipment as shown in the Install Guide (see 3, device settings).
- 2) Install the following components of the CS Soft Network Software according to the Install Guide.
  - a. MySQL Community Server 5.5.11: Installation
  - b. MySQL Community Server 5.5.11: Database Setup
  - c. OMServer
  - d. OMServerGUI
  - e. OMClient

### 2.2 Login

- For Windows Vista and above OMServerGUI must be executed with administrator rights. If the OMServerGUI is not running with administrator rights, no changes can be made.
- The password is always: DS300

### 2.3 Modbus

#### 2.3.1 Areas

- The areas are defined with the menu "Modbus -> Areas".  
At least one Modbus Area must be defined.
- Each measuring device must be allocated to one area (Modbus Area).  
The user will see the areas for which he has access rights.  
For the consumption analysis, these areas will later be used to form group totals.

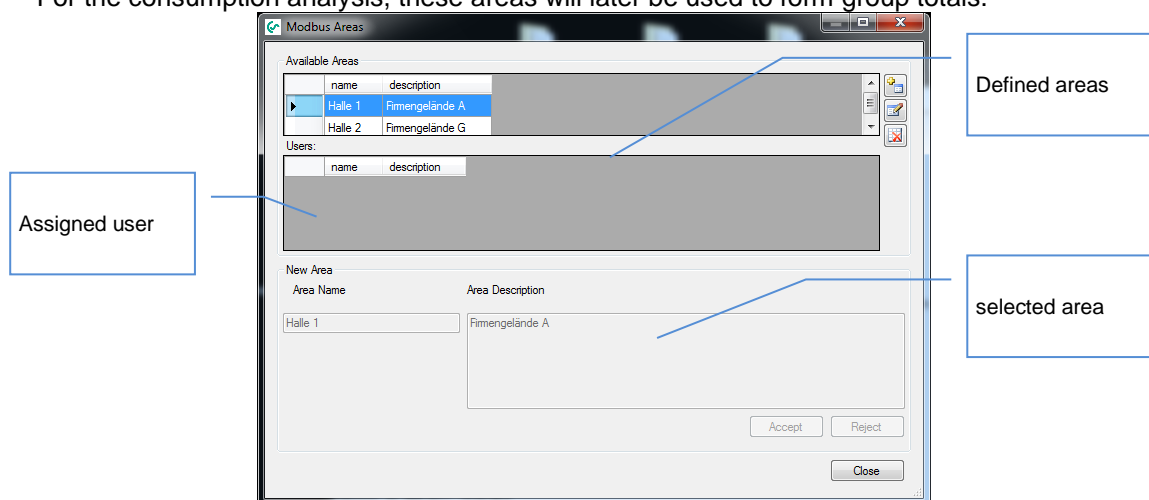


Illustration 1: Modbus Areas

2.3.2 Devices

- The devices are registered with the menu "Modbus -> Devices".
- A new entry is created with the "Add" button.
- Use the button "... " behind the IP address to open the mask "Auto detect devices...".
- With the button "Search" all connected devices are searched.

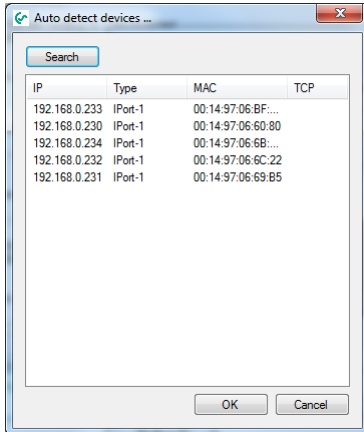


Illustration 2: Auto-detect devices ...

- Select the desired device and press "OK"

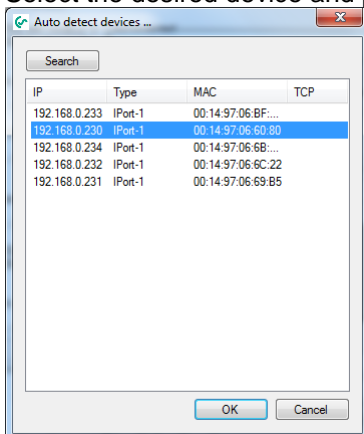


Illustration 3: Select device

- Alternatively, the device address can be entered directly into the field "IP address".

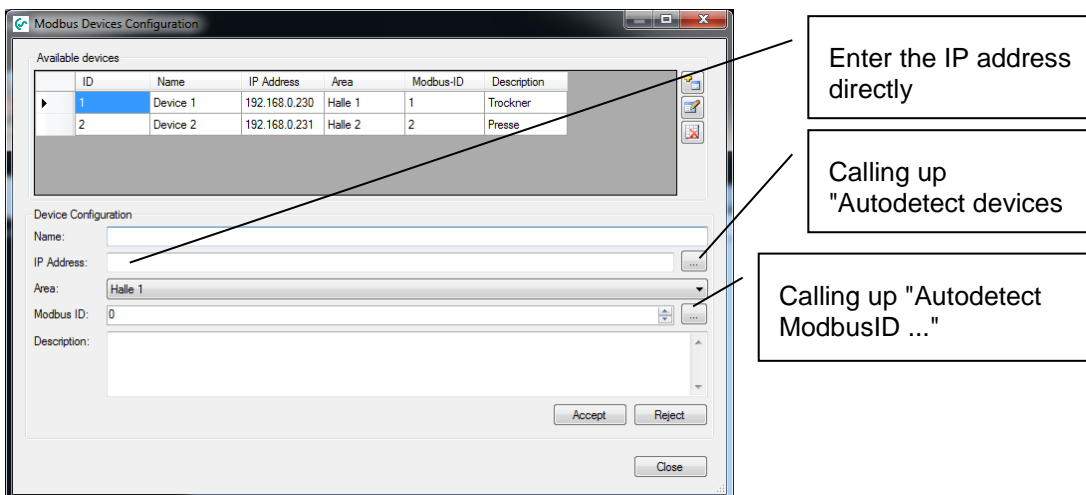


Illustration 4: Modbus Devices

- Assign the device to the desired area with the combobox.
- Use the button "..." behind the Modbus ID mask to open "Auto detect ModbusID...".
- Set the range where the ModbusID is to be searched for.  
The maximum range is from 1 to 247. Caution, when using the maximum range the search takes a long time.
- All the ModbusID's found will be listed in the lower section.

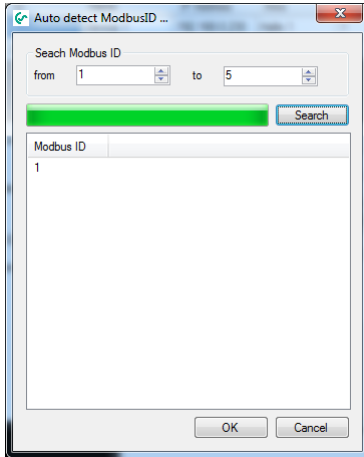


Illustration 5: Auto-detect ModbusID

- Mark the desired ModbusID.

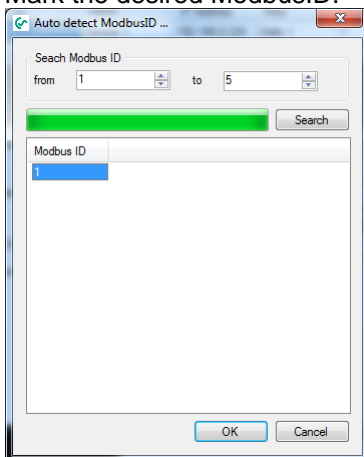


Illustration 6: Modbus ID selection



- Confirm selection with "OK". The selected ModbusID will be adopted.

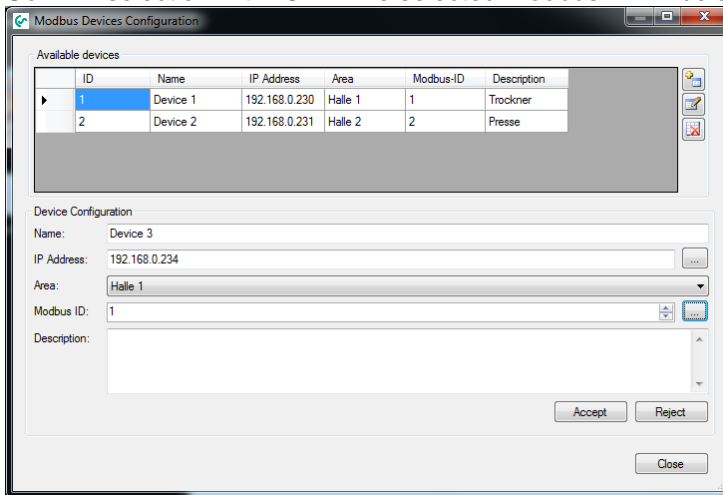
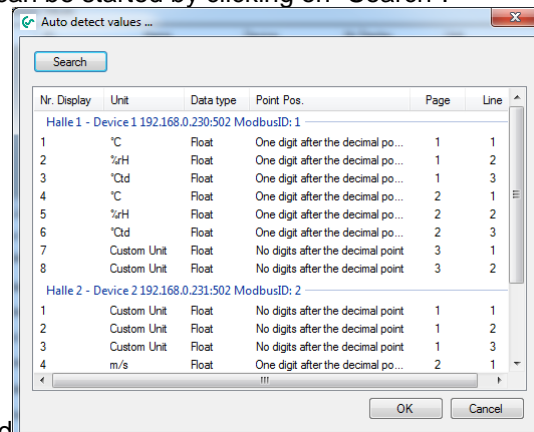


Illustration 7: Modbus Devices

- If desired, an additional description of the device can be entered in the "Description" field.
- Complete the entry with "Accept" and confirm.

### 2.3.3 Values

- The measurement values are registered with the menu "Modbus -> Values".
- Pressing the button "Add" automatically opens the mask "Auto-detect values ...".
- The search for all available measurements can be started by clicking on "Search".



- All available measurements will be displayed

Illustration 8: Auto-detect values ...

- If the interface to another device can not be opened, the search can be repeated after 1 minute. The device interface is only closed after the internal timeout.

- Select the desired measurement value and accept with "OK".

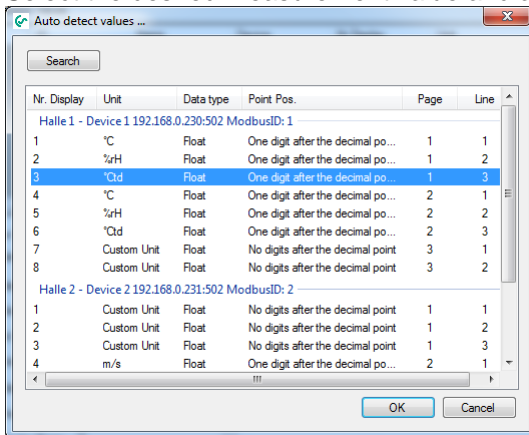


Illustration 9: Select measurement value

- Enter the name for the measured value
- If this pertains to a flow sensor, it must be manually assigned to the correct channel via the menu item "Channel".

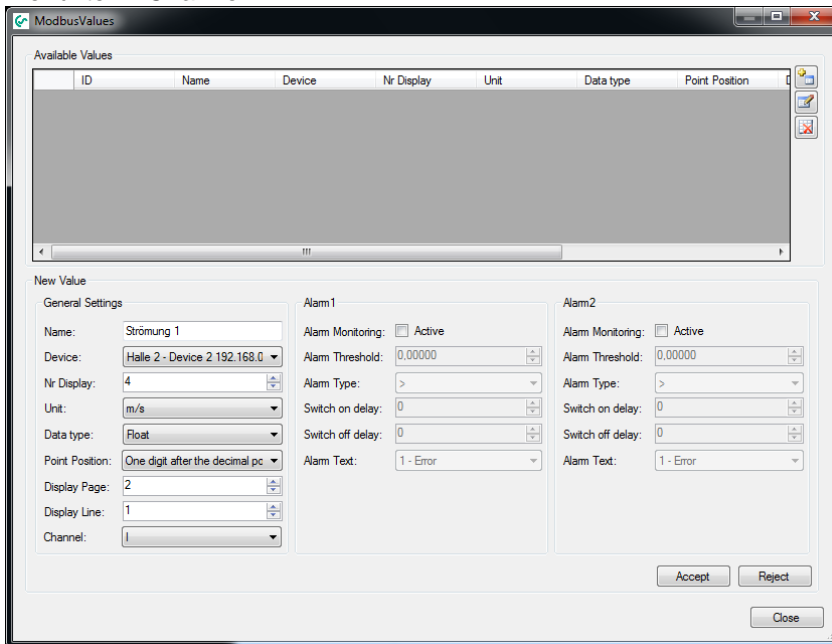


Illustration 10: Channel assignment

- The entry is completed by pressing the "Accept" button.
- All registered values are shown in the top section in a tabular form.

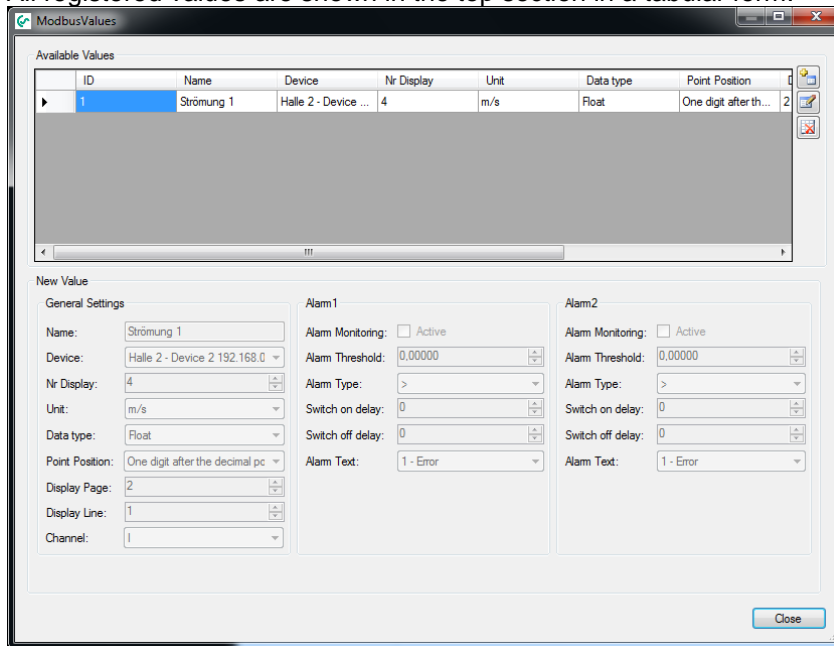


Illustration 11: registered measurement values

- Only registered measured values will be evaluated.
- Analog measurements are always displayed as a custom device.
- The resolution (Pointpos) of the device is automatically adopted. The resolution can be adjusted at this point. The client will use the resolution which is set here.

### 2.3.4 Cycle time

- The Modbus cycle time is set via the menu "Modbus -> Cycle time".
- The Modbus cycle time is freely definable. The measured values of the devices are queried in the preset intervals and the min/max values determined. The Modbus cycle time should lie within a range from 200 ms to 3 s.

## 2.4 Configuration

### 2.4.1 Mail

- The mail server is configured with the menu "Configuration -> Mail".

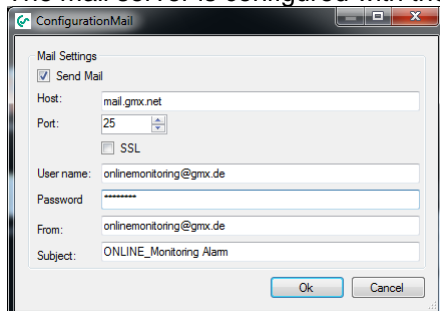


Illustration 12: Mail Configuration

- With the check box "Send Mail" the mail dispatch can be enabled/disabled. With an active mail dispatch, server errors and alarms are sent via mail.
- To test the configuration, use the menu option "Test-> Send test mail".

### 2.4.2 SMS Gateway

- With the menu "Configuration -> SMS gateway" the Gateway for the SMS dispatch can be configured.
- With the check box "Send SMS" the SMS dispatch can be enabled/disabled. With an active mail dispatch, server errors and alarms are sent via mail.
- If you utilize one of the two popular providers (smstrade.de, smskaufen.de) as a gateway, you can use the corresponding standard masks for the configuration.

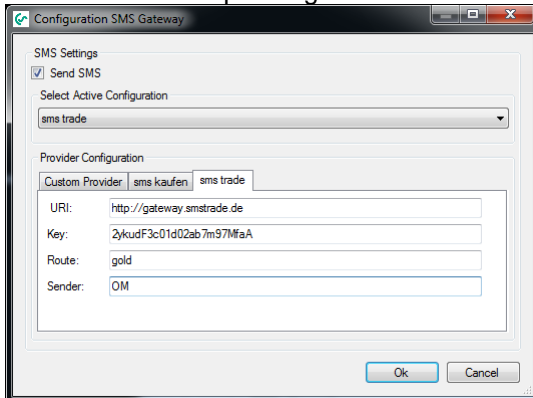


Illustration 13: SMS gateway configuration smstrade/smskaufen

- Otherwise, please use the general mask for the configuration of the SMS gateway.

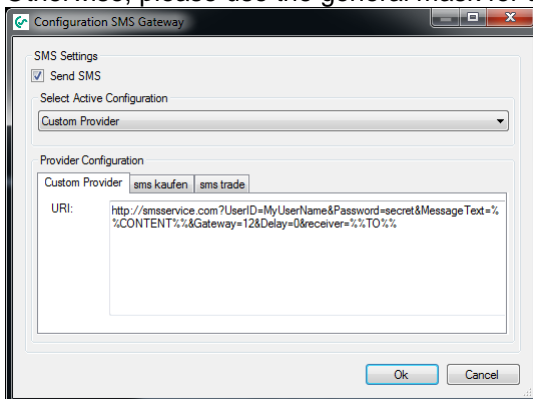


Illustration 14: SMS Gateway General Configuration

- In the general mask the vendor-specific HTTP interface string is entered into the text field. To correctly transmit the error message, add the placeholder %%CONTENT%% where appropriate instead of a text.
- Instead of the mail recipient, please enter the placeholder%%TO%%.
- To test the configuration, use the menu option "Test-> Send test SMS".

### 2.4.3 Database

- The access to the MySQL database must be configured via the menu option "Configuration-> Database".

**Configure Database**

MySQL Database Connection Settings

Hostname: localhost

Port: 3306

Database Name: cs\_omdatabase

Logging Interval (ms): 1000

Logging Factor: 10

Resulting max. Interval: 10000

Username: root

Password: \*\*\*\*\*

OK Cancel

- Name/IP address of the computer where the MySQL database is installed.
- Port of the MySQL database (default: 3306 - see Install Guide p. 11)
- Name of the database (default: cs\_omdatabase - see Install Guide p. 13)
- Interval in which the data is stored in the database when value changes occur. (CAUTION: observe the data amount)
- Interval (logging interval \* factor) in which the data is stored in the database in any case (without value changes).
- Database User: root
- Password for the database access (see the Install Guide, p. 13 (default: C.S. DB))

### 2.4.4 Database Backup

- Via the menu item "Configuration -> Database Backup" the database backup can be configured.

**Database Backup**

Database Settings

Hostname: localhost

Port: 3306

Database Name: cs\_omdatabase

Username: root

Backup Parameter

Run backup on schedule

Backup Interval (days): 7

Backup Time: 00:00:00

Result file path: C:\Windows\Temp

Mysqldump.exe path: C:\Program Files\MySQL\MySQL Server 5.5\bin\mysqldump.exe

Single Transaction:  enabled

OK Cancel

- The database settings will automatically be accessed.
- Every x number of days, the backup is performed.
- Time of day at which the backup is performed.
- Path in which the backup is stored.
- Path of mysqldump.exe

Illustration 15: Database Backup

- With the checkbox "Run backup on schedule", an automatic backup of the database can be configured.
- CAUTION: the correct "mysqldump.exe" path must be set.

### 2.4.5 Client-Server Communication

- Via the menu item "Configuration -> Client - Server Configuration" the port to be used for the WCF communication between server and client application is determined. In addition, the

cycle time is defined, which is used for the communication between the server and client.

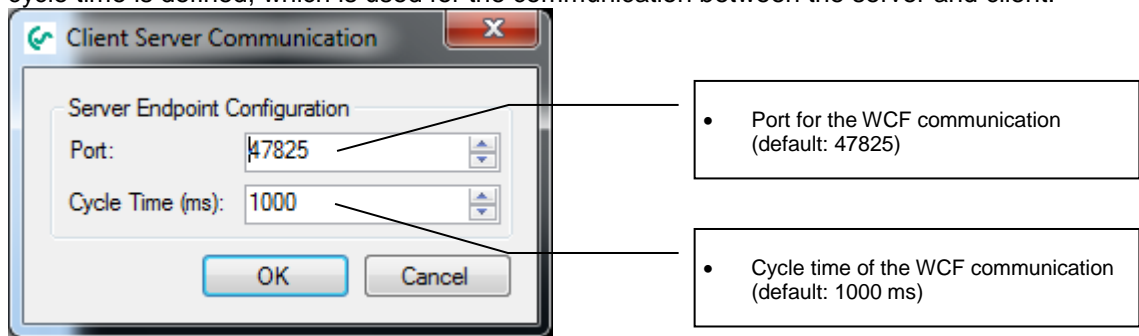


Illustration 16: Configuring the client-server communication

### 2.4.6 Alarm text

- The alarm texts can be defined via the menu item "Configuration -> Alarm texts".
- The AlarmId (alarmTextID) is assigned by the software.
- The alarm texts can also be defined in different languages.
- A further language can be added with the button "Add culture".
- The alarm text can also be edited with the OMClient.

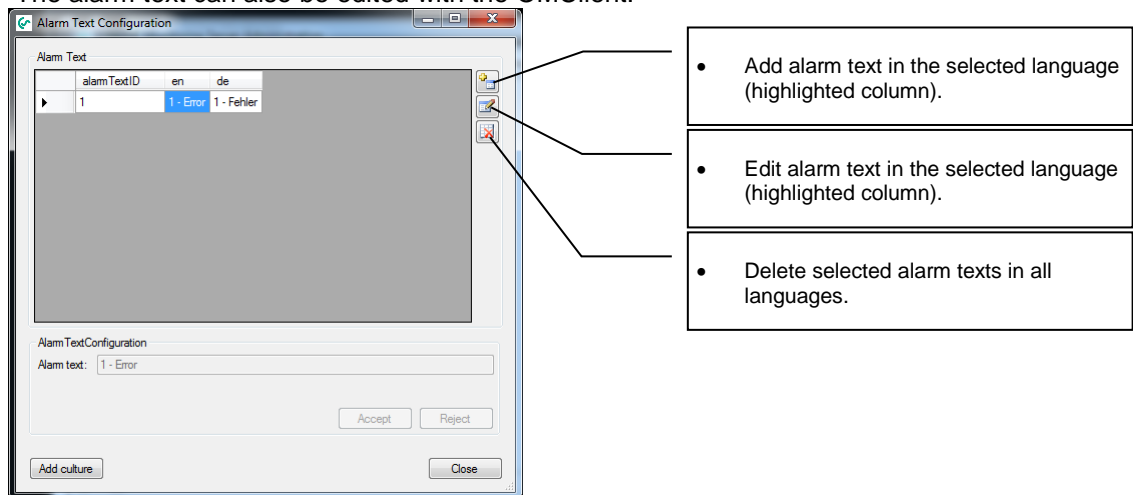


Illustration 17: Configuration of alarm texts

## 3 Test

### 3.1 Send test mail

- Function to test the mail server configuration.

### 3.2 Send test SMS

- Function to test the configuration of the SMS gateway.

### 3.3 Database Memory

- With the help of this test function it can be determined, how long sufficient hard disk space will be available. In the calculation it is assumed that the hard drive is solely used for the storage

of measured values.

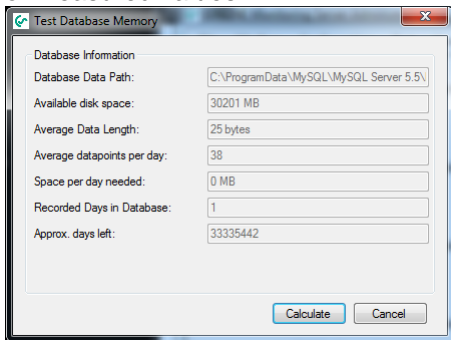


Illustration 18: Database memory check

- Deleting old data, see 7.6.1.

## 4 User administration

- Via the menu item "User Administration -> User" you can access the user management.

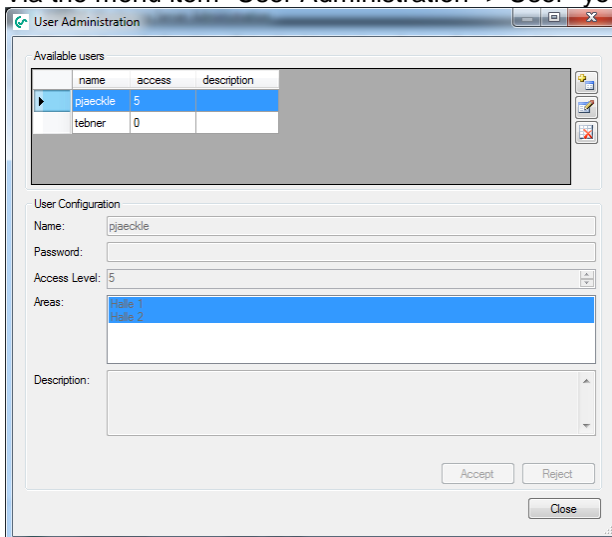


Illustration 19: User administration

- The password will be assigned in the OMServerGUI and can not be changed in OMClient.
- Each user can be assigned an access level between 0 and 9.  
To erase data in the OMClient an authorization level of 9 is required.  
For the definition of alarms an authorization level of at least 3 is required.
- Different areas can be allocated to each user
- **CAUTION:** Only "areas" where the box is ticked are allocated to the current user.

## 5 Service

- The CS Soft Network Server runs as a Windows service. Via the menu item "Service", the service can be stopped, started or restarted depending on your selection.
- The current status of the service is displayed in the status bar.

- Information, messages and errors are logged in the event log and displayed in the main window of the OMServerGUI.

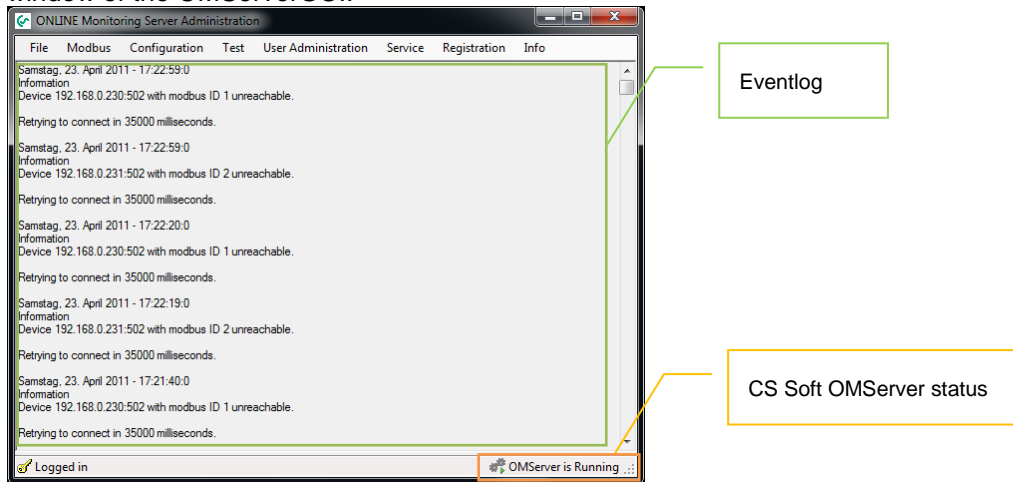


Illustration 20: Main Window

## 6 Registration

- To protect against unauthorized access the password must be entered again after 10 minutes.
- Via the menu item "Registration -> Login" the password can be entered.
- The logout can be triggered manually using the menu item "Registration -> Logout".
- The login status is displayed in the status bar.
- The password is always "DS300"

## 7 Database

With the help of this menu item, the user can perform different activities regarding the database.

To quickly access the data, care should be taken that the amount of data the database does not become too extensive.

For example, a database can always be created for a respective time period. The old database can be stored without loss of data on any medium. If necessary, you can then access the old data.

In order to be able to access all the data without changing the database, old data can be compressed lossy.

**CAUTION:** The user is responsible for the correct operation. In case of incorrect operation, data can be permanently deleted.

### 7.1 New

- A new database can be created via the menu item "Database -> New". The database is created on the MySQL server which is currently connected.
- The operator must enter the name of the database:

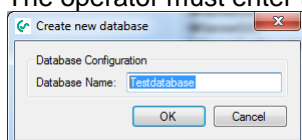


Figure 21 : New database



## 7.2 Export

- The currently used database can be exported via "Database -> Export". A path for the storage can be selected freely. The export file will receive a default name. If possible, this file name should be retained.

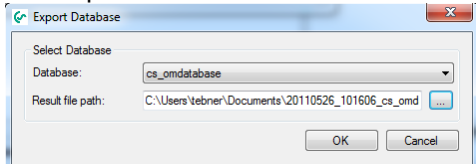


Illustration 22: Database export

## 7.3 Import

- Exported data can be added to the current database data with "Database -> Import". **CAUTION: Only data with a matching configuration can be imported.**

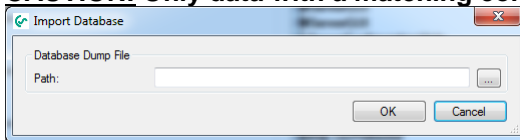


Illustration 23: Database import

## 7.4 Restore

- The exported data will be restored 1:1. The database name of the original database will be used. The database name cannot be changed. If a current database with the same name exists, the data will be overwritten.

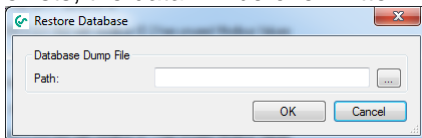


Illustration 24: Database restore

## 7.5 Compress

- With "Database-> Compress" the user can perform a compression within the selected database for the selected values in the specified time range. From the min/max values of the min or max value will be used in the new interval. The average will be created in the new interval from the measured values.

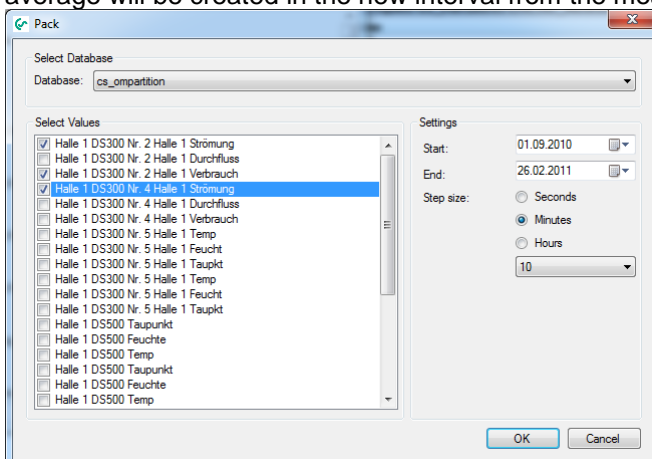


Illustration 25: Data Compression

- **CAUTION:** The data compression will be performed in the selected database. If no export of the data was previously performed, the old data can not be restored.

## 7.6 Delete

### 7.6.1 Data

- Old data can be deleted via the menu item "Database -> Delete -> Data". In the selected database, all data which is older than the specified date will be permanently deleted.

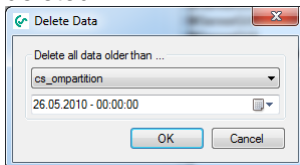


Illustration 26: Delete old data

### 7.6.2 Database

- To delete an entire database, the menu item "Database -> Delete -> Database" must be selected. After selecting the database and confirming, the database will be permanently deleted.

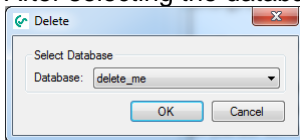


Illustration 27: Database deletion

# 8 Info

## 8.1 Help

- The Help file (PDF File) can be accessed via the menu item "Info -> Help".

## 8.2 About

- The current version information can be output via the menu command "info -> About".

## 8.3 Licence

- The current licensing information can be accessed via "Info -> License".
- More information on licensing can be found under 9 Licensing.

## 9 Licensing

- After installation, you automatically have a 10 day trial version. At the start of the OMServerGUI the remaining time is displayed in the following dialog.

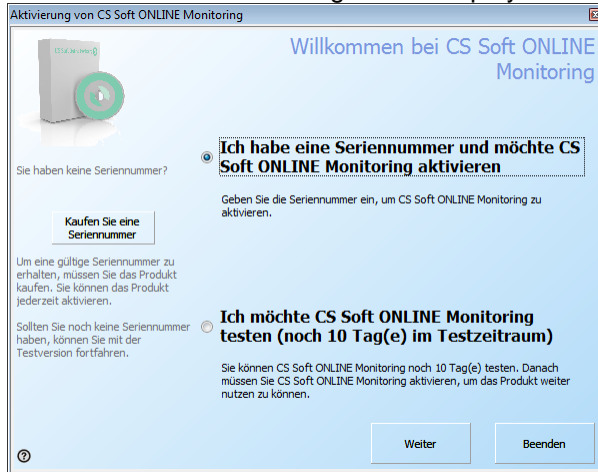


Illustration 28: Trial version info

- With "?" you can select a different language.
- If you downloaded the software from our website, you can purchase a serial number in our online shop by clicking on "Buy a serial number".
- If you have a serial number, you can activate the software.
- There are four ways to activate the software:

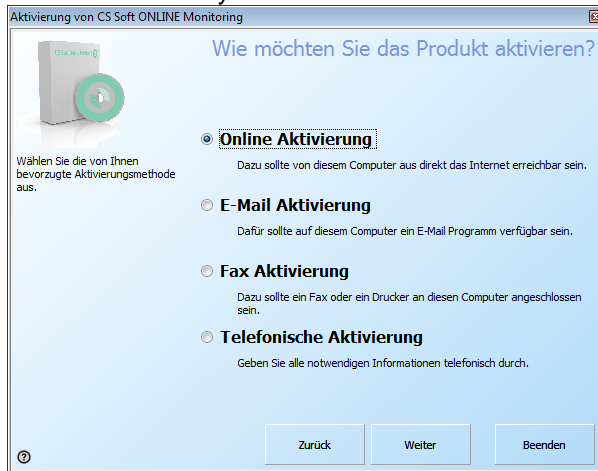


Illustration 29: Activation options

- Please use the "online activation" if your computer has Internet access. If your computer does not have Internet access, you can use the "Email Activation" to perform the activation via e-mail with any computer. When you activate via email the activation code will be sent to you within 15 minutes.
- Please use the registration via fax or telephone only if you do not have Internet access.

- In the next step (regardless of the activation type), please enter your activation information.

Aktivierung von CS Soft ONLINE Monitoring

Geben Sie bitte die Aktivierungsdaten ein

Bitte geben Sie alle für den Start des Aktivierungsvorgangs benötigten Informationen ein.

Seriennummer

[Wo finden Sie Ihre Seriennummer?](#)

Kundennummer

Firma

Anrede

Vorname

Nachname

Land

E-Mail Adresse

Zurück Weiter Beenden

Illustration 30: Activation data

- For the "online activation" the registration is completed automatically, otherwise you must enter the activation key sent to you at a later point in time via "Info -> License -> Button "Enter Activation Key".
- If the software was activated online, there is the possibility to use the button "transfer license" to transfer the software from computer A to computer B.

## 10 Support and Service

If you have questions about our products or require technical support for the installation or use of our software, please contact us by e-mail:

[info@cs-instruments.com](mailto:info@cs-instruments.com)

or by phone call:

**+49 461 7002025**

Phone support and Teamviewer access  
(15 minutes = 30 Euro, minimum 45min)

We will answer all inquiries within 24-48 hours.