

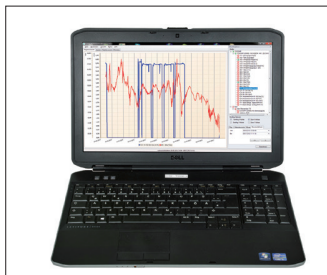


## DP 400 mobile -

### with integrated dew point and pressure measurement

For measurement of all humidity parameters under pressure up to 232 psi

The DP 400 mobile with integrated, rechargeable battery has been developed especially for field use. In addition to a highly precise dew point sensor, a precise pressure sensor is also installed in the device up to 232 psi. So in addition to the pressure dew point in °Ftd. ; the temperature in °F and the line pressure in psi, further moisture parameters (% RH, mg/CF, lb/CF) as well as pressure-dependent measured values (g/kg, ppm v/v, atm. dew point °F) can also be calculated.



#### SPECIAL FEATURES:

- Precise dew point measurement down to -122 °Ftd, ppm V/V, atmospheric dew point
- Robust service case for field use
- Integrated pressure measurement up to 232 psi
- Integrated measuring chamber with integrated dry container protects the dew point sensor during transport and guarantees quick adaption time
- Humidity sensor with long-term stability: precise, condensation-resistant, quick adaption time
- Optional: 2 further sensor inputs for external sensors
- Optional: Integrated data logger

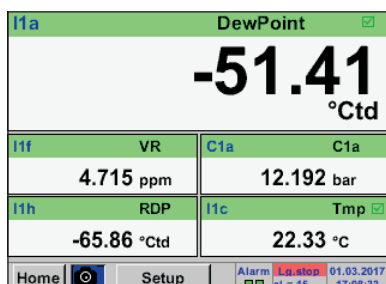


6mm plug connection for measuring gas/compressed air feed

**Option:** Two further sensor inputs for: (flow, pressure, dew point, 4...20 mA, Modbus-RTU...)

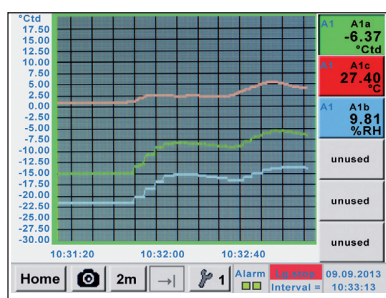


## Easy operation via touchscreen



### Actual measured values

All measured values can be seen at a glance. Threshold value exceedances are indicated in red. Thanks to the integrated pressure sensor, DP 400 mobile is able to calculate the atmospheric dew point.



### Graphic view

Crosscheck to DS400



### Data logger

Measured values are stored in DP 400 by means of the option integrated data logger. The time interval can be freely set. Furthermore there is the possibility to fix the starting time and the end time of the data recording. Read-out of the measured data via USB interface or via the optional Ethernet interface.

DESCRIPTION	ORDER NO.
DP 400 mobile - Portable dew point meter with integrated pressure measurement, incl. transportation bag for PTFE hose and power supply	0500 4505
Option: Integrated data logger for 100 million measured values	Z500 4002
Option: Integrated Ethernet and RS 485 interface	Z500 4004
Option: Integrated webserver	Z500 4005
Option: "Mathematics calculation function" for 4 freely selectable channels, (virtual channels): addition, subtraction, division, multiplication	Z500 4007
Option: 2 additional sensor inputs for external sensors (1 x digital sensor Modbus, 1 x analog sensor)	Z500 4001
CS Basic – data evaluation graphically and in tabular form - reading of the measured data via USB or Ethernet, license for 2 workstations	0554 8040
Connection cable for VA / FA sensors to mobile devices, ODU/M12, 16 ft.	0553 1503
Connection cable for pressure, temperature or third-party sensors on mobile devices, ODU/open ends, 16 ft.	0553 0501
Connection cable for pressure, temperature or third-party sensors on mobile devices, ODU/open ends, 32 ft.	0553 0502
Extension cable for mobile instruments ODU/ODU, 32 ft.	0553 0504

TECHNICAL DATA DP 400 MOBILE	
<b>Display:</b>	3.5" touch screen
<b>Measuring range:</b>	-112...122 Ftd -4...158 Ftd 0...100% RH 0...232 psi ± 0.5 %
<b>Accuracy:</b>	± 1 °F at +122...-4 Ftd ± 2 °F at -4...-58 Ftd ± 3 °F at -58...-112 Ftd
<b>Moisture parameters:</b>	g/m³, mg/m³, ppm V/V, g/kg, ft. atm, % RH
<b>Interface:</b>	USB interface
<b>Data logger option:</b>	16 GB SD memory card (100 million values)
<b>Power supply for external sensors:</b>	Output voltage: 24 VDC ± 10% Output current: 120 mA in continuous operation
<b>Power supply:</b>	Internal rechargeable Li-Ion batteries, approx. 12 h continuous operation, 4 h charging time
<b>Process connection:</b>	6 mm plug connections
<b>Ambient temperature:</b>	32...122 Ftd
<b>EMC:</b>	DIN EN 61326-1

The whole range of suitable sensors can be found on pages 38 to 41