



## DP 400 mobile with integrated dew point and pressure measurement

For measurement of all humidity parameters under pressure up to 16 bar.

The portable dew point meter with integrated, rechargeable battery has been developed especially for the field use. Besides a highly precise dew point sensor the device also contains a precise pressure sensor up to 16 bar. So in addition to the dew point in °Ctd, the temperature in °C and the line pressure in bar also further moisture parameters (% RH, mg/m<sup>3</sup>, g/m<sup>3</sup>) as well as pressure-dependent measuring values (g/kg, ppm v/v, atm, dew point °C) can be calculated.



Sensor protected during transport or storage.



6 mm plug connection for measuring gas / compressed air feed

Option: 2 further sensor inputs (for flow, pressure, dew point, 4...20 mA, Modbus RTU...)

### Special features:

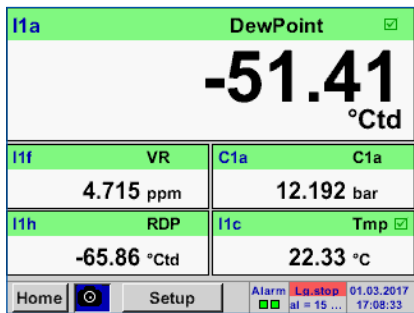
- Precise dew point measurement down to -80°Ctd
- Robust case for field use
- Integrated pressure measurement up to 16 bar
- Integrated measuring chamber with integrated dry container protects the dew point sensor during transport and grants a quick adaptation time
- Long-time stable humidity sensor: precise, insensitive against dewing, quick adaptation time
- Optionally available: 2 further sensor inputs for external sensors
- Optionally available: Integrated data logger

### Technical data:

<b>Display:</b>	3.5" Touch screen
<b>Measuring range:</b>	-80...+50°Ctd -20...+70°C 0...100 % RH 0...16 bar ± 0.5 %
<b>Accuracy:</b>	± 1°C at 20...-20°Ctd ± 2°C at -20...-50°Ctd ± 3°C at -50...-80°Ctd
<b>Humidity parameters:</b>	g/m <sup>3</sup> , mg/m <sup>3</sup> , ppm V/V, g/kg, °Ctdatm, % RH
<b>Interface:</b>	USB interface
<b>Option Data logger:</b>	4 GB SD memory card (100 million values)
<b>Voltage supply for external sensors:</b>	Output voltage: 24 VDC ± 10% Output current: 120 mA in long-term use
<b>Current supply:</b>	Internally loadable Li-Ion batteries approx. 12 h continuous operation, 4 h charging time
<b>Connection:</b>	6 mm plug connections
<b>Ambient temperature:</b>	0...+50°C
<b>EMV:</b>	DIN EN 61326

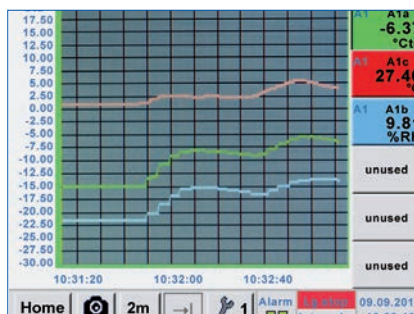


## Easy operation via touch screen



### Actual measured values

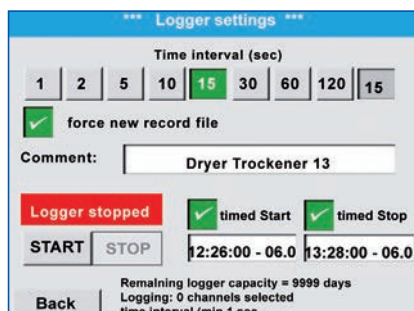
All measured values are visible at a glance. Exceedance of limit value is indicated in red. Due to the integrated pressure sensor DP 400 mobile is able to calculate the atmospheric dew point.



### Graphic view

In the graphic view all measured values are indicated as curves.

It is possible to browse back on the time axis by a slide of the finger (without data logger maximum 24 h, with data logger back to the start of the measurement).



### Data logger

Measured values are stored in DP 400 by means of the option „integrated data logger“.

The time interval can be freely set. Furthermore there is the possibility to fix the starting time and the end time of the data recording.

Read-out of the measured data via USB interface or via the optional Ethernet interface.

Description	Order No.
<b>DP 400 mobile - Portable dew point meter with integrated pressure measurement, incl. transportation bag for teflon hose and power supply</b>	<b>0500 4505</b>
Option: Integrated data logger for 100 million measured values	Z500 4002
Option: Integrated Ethernet and RS 485 interface	Z500 4004
Option: Integrated webserver	Z500 4005
Option: „Mathematics calculation function“ for 4 freely selectable channels, (virtual channels): addition, subtraction, division, multiplication	Z500 4007
Option: 2 additional sensor inputs for external sensors (1 x digital sensor Modbus, 1 x analogue sensor)	Z500 4001
CS Soft Basic - data evaluation in graphic and table form - reading out of the measured data via USB stick (Software please see on page 54)	0554 7040
Connection cable for VA/FA series on mobile instruments, ODU / M12, 5m	0553 1503
Connection cable for pressure, temperature or external sensors on mobile instruments, 5 m	0553 0501
Connection cable for pressure, temperature or external sensors on mobile instruments, 10 m	0553 0502
Extension cable for mobile instruments ODU/ODU, 10m	0553 0504