

New

Chart recorder



Webserver

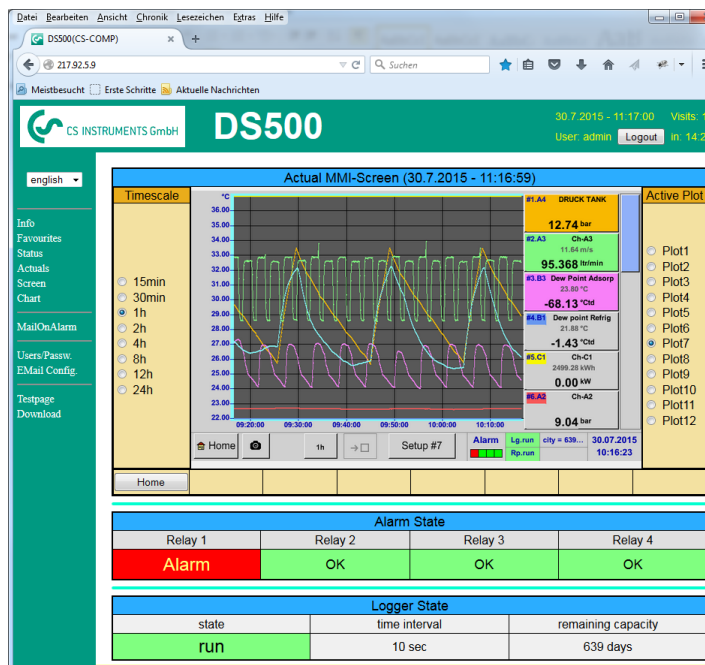
The new webserver with extended features for the chart recorders DS 500 and DS 400 is available with immediate effect. Users can get direct access to their measuring values world-wide (current and historic measuring values) and display the measuring values on their smart phone, tablet or computer. For monitoring of threshold values users can receive an automated „alarm E-mail“.

The new web server can be ordered as an option with each stationary DS 500/400, but also for their mobile counterparts. For using the features of the webserver, the DS 500/400 must be set up with it's own IP address within the network.

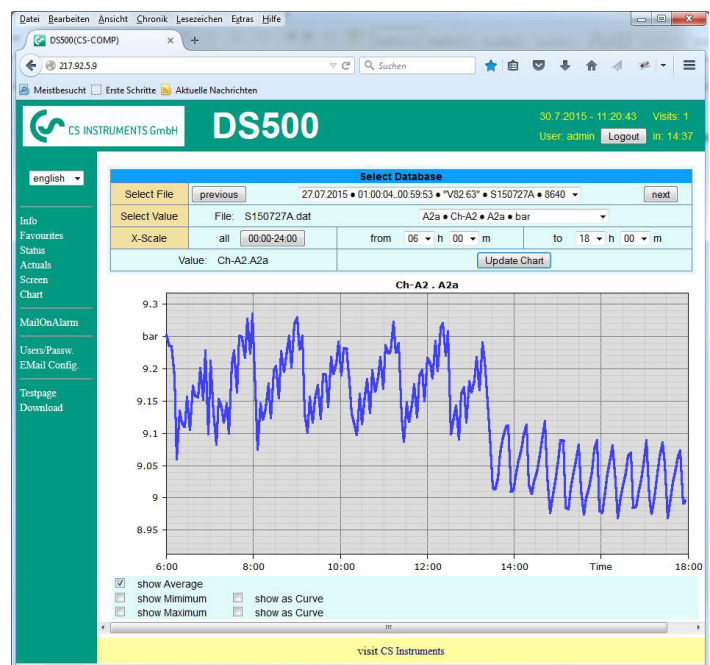
The webserver provides a website, which displays the measuring values. This website can be accessed from any web browser on each smart phone, tablet or computer via it's unique IP address. This is all possible without the installation of any new or additional software.



View of the real time measuring values (graphic and table view)



View of the historic measuring values as a single chart (time period freely selectable)



Automated „alarm e-mail“ for threshold value exceedance:

Access authorization

Different groups with different users/passwords can be assigned to different access levels.

Starting the data logger

In case of a stopped data logger the group operator or administrator can start the data logger remotely, via the web server.

PS: The new webserver can be retro fitted to any DS 500/ DS 400 already in use.